



SMX-LL5

LED ROADWAY LIGHTING



17WiE-52WiE
50W - 150W HPS EQUIV.



53WiE-105WiE
150W - 250W HPS EQUIV.



107WiE-166WiE
250W - 400W HPS EQUIV.



168WiE-260WiE
400W+ HPS EQUIV.

SMX-LL5 LED ROADWAY LIGHTING

Project Name:

Date:

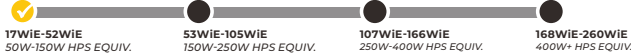
Project Number:

Note:

17 WiE - 52 WiE COBRA HEAD

50W - 150W HPS EQUIVALENT

CLICK TO
OTHER SIZES



Features

HPS EQUIVALENT

50W HPS to 150W HPS

CONSTRUCTION

Die cast aluminum housing ASTM A380 (default) & A360 (optional)
Tool-less entry/access
Terminal block for Class 1 connections (6AWG -14AWG)
Bubble level included
2-bolt Slip Fitter mounts to 1-5/8" to 2-3/8" O.D. Arm
ANSI C136.31 3G Vibration compliant
Standard RAL Gray color
Operating Temperature -40°C to +50°C
ANSI C136.41 7-pins rotatable receptacle included
ANSI C136.15 NEMA label included

ELECTRICAL

Input voltage 120-277 VAC, 50/60 Hz
20KV/10KA Surge Protection included
0-10V dimmable
IP-66 rated LED driver
Power Factor > 0.9
Total Harmonic Distortion (THD) < 15%
EMC complies with FCC 47 CFR Part 15
LED driver expected life > 100,000 hours @ 25°C ambient
ANSI C136.22 labels included
Optional fuse

FIELD ADJUSTABLE

Optional field wattage/lumen output adjustments

CONTROLS

7-pins receptacle with shorting cap (default)
7-pins receptacle with photocell
7-pins receptacle with Smart control node
Luminaire with No Receptacle

CERTIFICATIONS & COMPLIANCES

UL-1598, suitable for wet location
DLC V5.1 Premium
DarkSky approved (CCT 3000K and lower)
ISO 9001
ANSI C136.3, C136.10, C136.13, C136.15, C136.22, C136.25,
C136.31, C136.37, C136.41, C78.377, C82.77



APPLICATION

Local, Collector, Arterial Roadways & Intersections

FINISH

Corrosion Resistant Polyester Powder Coating ≥ 3 mil Nominal Thickness
ASTM B117 5,000 Hours Salt Spray Scribe Creepage Rating of 7 per ASTM D1654
ASTM D523 Coating Gloss Retention Compliant
ASTM G154 QUV Compliant
Optional Coastal Finish per AAMA 2604
Standard RAL Gray Color
Optional Black, Dark Bronze, and White Color

OPTICAL

Standard CCT 2700K, 3000K, 4000K, and 5000K
Dark-sky approved CCT 3000K and lower
Optional CCT 2200K and 5700K
No uplight, U = 0 per IESNA TM-15
Color Rendering Index (CRI) > 70
IESNA TYPE II, III, and IV
IP-66 rated LED light module
RoHS compliant LEDs
Photometric performance is tested per IESNA LM-79, LM-63
LED light engine, L₇₀ > 100,000 hours @ 25°C ambient per LM-80/TM-21
2,500 to 8,000 Lumens
145 to 165 Lumens per Watt

Lumen maintenance @ 25°C

Calculated per TM-21 based on LM-80 data and in-situ testing.

Models	60,000 hours	80,000 hours	100,000 hours
17 WiE - 52 WiE	> 98 %	> 98 %	> 97 %

LIGHT SHIELD

House-side shield
Left-side shield
Right-side shield
Cul-de-sac shield
Street-side shield

WARRANTY

7-year product warranty, standard
10-year product warranty, optional

SMX-LL5 LED ROADWAY LIGHTING

Project Name:

Date:

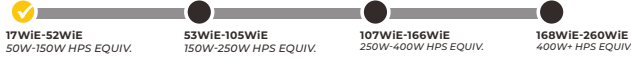
Project Number:

Note:

17 WiE - 52 WiE COBRA HEAD

50W - 150W HPS EQUIVALENT

CLICK TO
OTHER SIZES



Ordering Information

EXAMPLE: SMX-17WiE-NV-LL5-00-2770-T202-P-DB-10-FA

SMX - WiE - - LL5 - - - - - - -

A
B
C
D
E
F
G
H
I

A	B	C	D	E
Wattage	Voltage	Control	CCT / CRI	Distribution
17 17WiE 21 21WiE 24 24WiE 27 27WiE 33 33WiE 39 39WiE 42 42WiE 45 45WiE 50 50WiE 52 52WiE	NV 120-277VAC	00 7-pin Receptacle & Shorting Cap PH 7-pin Receptacle & Photo Electric WC 7-pin Receptacle & Wireless Control NR No receptacle	2270 2200K / CRI 70 2770 2700K / CRI 70 3070 3000K / CRI 70 4070 4000K / CRI 70 5070 5000K / CRI 70 5770 5700K / CRI 70 TF Turtle Friendly 590nm	T202 Type II B T212 Type II F T302 Type III T402 Type IV

F	G	H	I
Mounting	Finish	Warranty	Option
P Arm Mount No Bracket	Blank Standard Gray DB Dark Bronze BK Black WH White X Customize CF Coastal Finish AAMA 2604	Blank Standard 7-Year Limited Warranty 10 10-Year Limited Warranty	Blank Standard ANSI C136.15 NEMA Label <i>Included</i> Blank Standard 20kV/10kA Surge Protection Device <i>Included</i> FA Field Adjustment CUL Customized Utility Label P7TL 7-pin Receptacle, Toolless type SPD20-IN 20kV/10kA Surge Protection with Indicator FS Fusing ¹ ELI External Level Indicator CPL Customized Package Label
Additional mounting on PG 6. Order separately.			Additional shield accessories on PG 6. Order separately.

¹ Identify and provide specific discrete voltage (i.e. 120VAC or 220VAC or 240VAC or 277VAC) when placing product order with Fuse option



SMX-LL5 LED ROADWAY LIGHTING

Project Name:

Date:

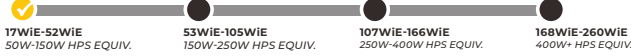
Project Number:

Note:

17 WIE - 52 WIE COBRA HEAD

50W - 150W HPS EQUIVALENT

CLICK TO
OTHER SIZES



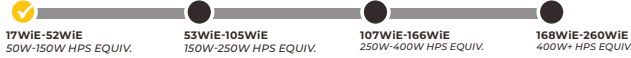
Performance Data 120-277VAC

Models	CCT	T202				T212				T302				T402			
		Watts	Lumen	Efficacy	BUG	Watts	Lumen	Efficacy	BUG	Watts	Lumen	Efficacy	BUG	Watts	Lumen	Efficacy	BUG
17WIE	2700K	17W	2649	153	B1U0G1	18W	2709	152	B1U0G1	17W	2602	152	B1U0G1	17W	2488	144	B1U0G1
	3000K	17W	2656	154	B1U0G1	18W	2726	154	B1U0G1	17W	2655	154	B1U0G1	17W	2525	146	B1U0G1
	4000K/5000K	18W	2856	162	B1U0G1	18W	2894	164	B1U0G1	18W	2987	166	B1U0G1	18W	2668	151	B1U0G1
21WIE	2700K	21W	3212	152	B1U0G1	22W	3278	151	B1U0G1	21W	3203	151	B1U0G1	21W	3051	144	B1U0G1
	3000K	21W	3221	153	B1U0G1	22W	3317	152	B1U0G1	21W	3216	153	B1U0G1	21W	3091	145	B1U0G1
	4000K/5000K	22W	3519	162	B1U0G1	22W	3533	162	B1U0G1	22W	3561	166	B1U0G1	22W	3285	151	B1U0G1
24WIE	2700K	24W	3645	151	B1U0G1	25W	3710	149	B1U0G1	24W	3586	149	B1U0G1	24W	3418	144	B1U0G1
	3000K	24W	3674	151	B1U0G1	25W	3736	150	B1U0G1	24W	3685	152	B1U0G1	24W	3427	144	B1U0G1
	4000K/5000K	24W	3902	161	B1U0G1	24W	3903	161	B1U0G1	25W	4021	164	B1U0G1	25W	3694	150	B1U0G1
27WIE	2700K	27W	4060	149	B1U0G1	27W	4037	149	B1U0G1	27W	3990	148	B1U0G1	28W	3948	140	B1U0G1
	3000K	28W	4137	150	B1U0G1	28W	4153	149	B1U0G1	28W	4131	150	B1U0G1	28W	4029	142	B1U0G1
	4000K/5000K	27W	4348	160	B1U0G1	28W	4430	160	B1U0G1	28W	4509	163	B1U0G1	28W	4185	150	B1U0G1
33WIE	2700K	32W	4714	146	B1U0G1	34W	4875	146	B1U0G1	33W	4790	146	B1U0G1	33W	4607	139	B1U0G2
	3000K	33W	4912	147	B1U0G1	33W	4903	147	B1U0G1	34W	4962	147	B1U0G1	33W	4663	140	B1U0G2
	4000K/5000K	33W	5197	157	B1U0G1	34W	5329	157	B1U0G1	33W	5376	161	B1U0G1	34W	4931	147	B1U0G2
39WIE	2700K	39W	5625	143	B2U0G2	39W	5564	143	B1U0G1	39W	5543	142	B1U0G1	39W	5250	135	B1U0G2
	3000K	40W	5715	143	B2U0G2	39W	5577	144	B1U0G1	39W	5575	145	B1U0G1	39W	5321	137	B1U0G2
	4000K/5000K	39W	5977	154	B2U0G2	39W	5981	154	B1U0G1	38W	5911	156	B1U0G1	39W	5589	144	B1U0G2
42WIE	2700K	42W	6203	148	B2U0G2	43W	6166	143	B1U0G1	42W	6248	148	B2U0G2	41W	5723	138	B1U0G2
	3000K	42W	6275	150	B2U0G2	43W	6237	146	B1U0G1	43W	6352	150	B2U0G2	43W	5971	138	B1U0G2
	4000K/5000K	43W	6680	155	B2U0G2	42W	6614	156	B1U0G1	43W	6861	160	B2U0G2	43W	6294	145	B1U0G2
45WIE	2700K	45W	6641	147	B2U0G2	45W	6413	142	B1U0G1	46W	6692	146	B2U0G2	44W	6083	137	B1U0G2
	3000K	45W	6665	149	B2U0G2	45W	6501	144	B1U0G1	45W	6703	148	B2U0G2	45W	6216	138	B1U0G2
	4000K/5000K	45W	7033	155	B2U0G2	45W	7003	156	B1U0G2	46W	7271	159	B2U0G2	45W	6600	146	B1U0G2
50WIE	2700K	50W	7256	145	B2U0G2	50W	6980	141	B1U0G2	51W	7276	144	B2U0G2	51W	6800	135	B1U0G2
	3000K	50W	7300	146	B2U0G2	51W	7273	143	B1U0G2	50W	7291	146	B2U0G2	51W	6870	136	B1U0G2
	4000K/5000K	50W	7688	153	B2U0G2	50W	7751	155	B2U0G2	51W	8053	157	B2U0G2	51W	7241	143	B1U0G2
52WIE	2700K	52W	7386	142	B2U0G2	52W	7321	140	B1U0G2	53W	7547	143	B2U0G2	52W	6977	133	B1U0G2
	3000K	53W	7622	145	B2U0G2	52W	7425	142	B1U0G2	53W	7603	144	B2U0G2	52W	7039	135	B1U0G2
	4000K/5000K	52W	7999	153	B2U0G2	53W	8088	154	B2U0G2	52W	8228	157	B2U0G2	52W	7436	142	B1U0G2

17 WiE - 52 WiE COBRA HEAD

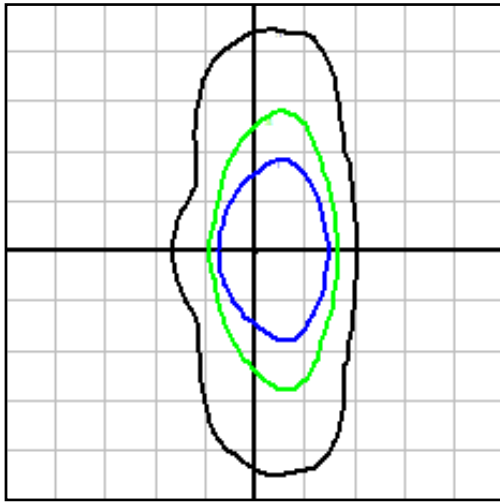
50W - 150W HPS EQUIVALENT

CLICK TO
OTHER SIZES



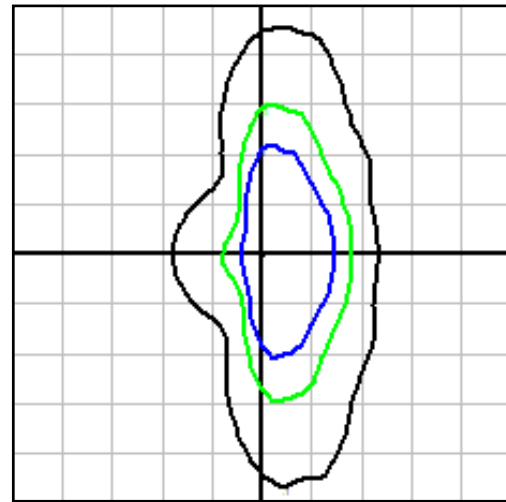
Photometric Plots

TYPE II B - T202
8,000 lumens, CCT 4000K



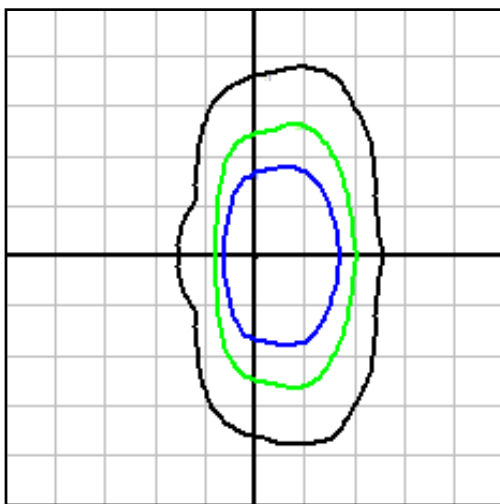
The plot is in units of mounting height of 20'.
Black 0.1 fc Green 0.5 fc Blue 1 fc

TYPE II F - T212
8,000 lumens, CCT 4000K
Controlled Backlight



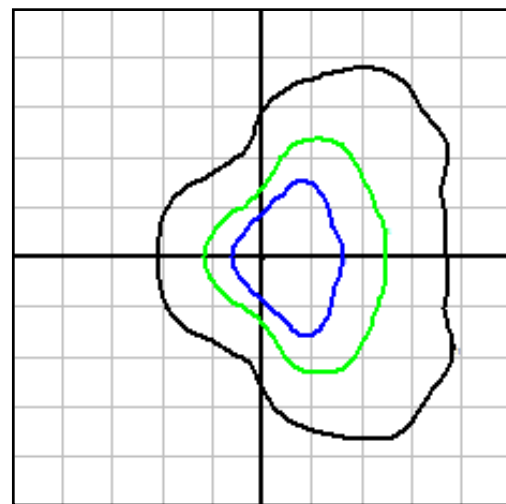
The plot is in units of mounting height of 20'.
Black 0.1 fc Green 0.5 fc Blue 1 fc

TYPE III - T302
8,000 lumens, CCT 4000K



The plot is in units of mounting height of 20'.
Black 0.1 fc Green 0.5 fc Blue 1 fc

TYPE IV - T402
8,000 lumens, CCT 4000K



The plot is in units of mounting height of 20'.
Black 0.1 fc Green 0.5 fc Blue 1 fc

SMX-LL5 LED ROADWAY LIGHTING

Project Name:

Date:

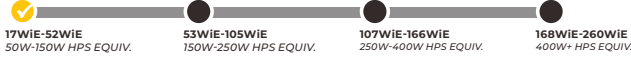
Project Number:

Note:

17 WIE - 52 WIE COBRA HEAD

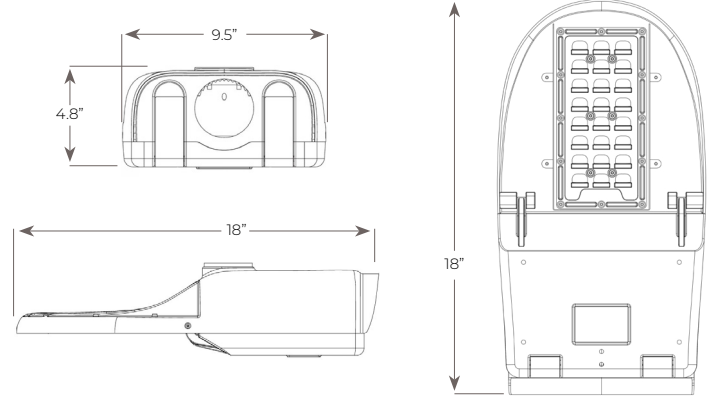
50W - 150W HPS EQUIVALENT

CLICK TO
OTHER SIZES



Product Dimensions

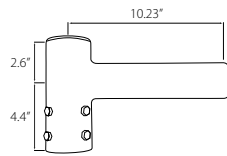
Effective Projected Area (EPA)	0.48 sq. ft.
Luminaire Weight	8 lbs.
Internal Leveling Adjustments	-5°, -2.5°, 0°, +5°, +10°
Mounting	Horizontal Mount Adjustable for 1.25" to 2" Nominal Mounting Pipe



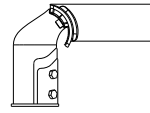
Mounting Bracket Options

ORDERING INFORMATION

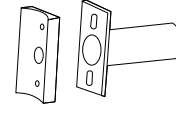
VMSB	Vertical Pole Mount Spoke Bracket Steel, no tilt
VMT	Vertical Pole Mount Fits 2-3/8" OD pole top; Aluminum alloy 0-45° Tilting, 5° Increment, Weight 5 lbs
SAS	Straight Arm for Square poles
SAR	Straight Arm for Round poles
MAS	Mast Arm for Square poles
MAR	Mast Arm for Round poles
AP	Aluminum Plate For 2" Tenon



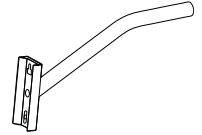
Vertical Pole Mount Spoke Bracket



Vertical Pole Mount



Straight Arm

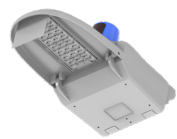


Mast Arm

Light Shield Options

ORDERING INFORMATION

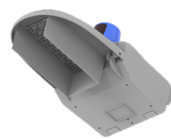
SSS	Street-side Shield
HSS	House-side Shield
CSS	Cul-de-sac Shield
RSS	Right-side Shield
LSS	Left-side Shield



Street-side Shield



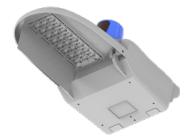
House-side Shield



Cul-de-sac Shield



Right-side Shield



Left-side Shield

Control Options

Shorting Cap
Photocell
Smart Control Node
No Receptacle



Shorting Cap



Photocell



Smart Control Node



No Receptacle

SMX-LL5 LED ROADWAY LIGHTING

Project Name:

Date:

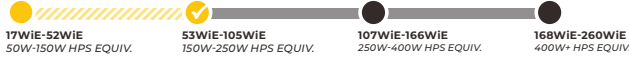
Project Number:

Note:

53 WiE - 105 WiE COBRA HEAD

150W - 250W HPS EQUIVALENT

CLICK TO
OTHER SIZES



Features

HPS EQUIVALENT

150W HPS to 250W HPS

CONSTRUCTION

Die cast aluminum housing ASTM A380 (default) & A360 (optional)
 Tool-less entry/access
 Terminal block for Class 1 connections (6AWG -14AWG)
 Bubble level included
 2-bolt Slip Fitter mounts to 1-5/8" to 2-3/8" O.D. Arm
 ANSI C136.31 3G Vibration compliant
 Standard RAL Gray color
 Operating Temperature -40°C to +50°C
 ANSI C136.41 7-pins rotatable receptacle included
 ANSI C136.15 NEMA label included

ELECTRICAL

Input voltage 120-277 VAC & 277-480VAC, 50/60 Hz
 20KV/10KA Surge Protection included
 0-10V dimmable
 IP-66 rated LED driver
 Power Factor > 0.9
 Total Harmonic Distortion (THD) < 15%
 EMC complies with FCC 47 CFR Part 15
 LED driver expected life > 100,000 hours @ 25°C ambient
 ANSI C136.22 labels included
 Optional fuse

FIELD ADJUSTABLE

Optional field wattage/lumen output adjustments

CONTROLS

7-pins receptacle with shorting cap (default)
 7-pins receptacle with photocell
 7-pins receptacle with Smart control node
 Luminaire with No Receptacle

CERTIFICATIONS & COMPLIANCES

UL-1598, suitable for wet location
 DLC V5.1 Premium
 DarkSky approved (CCT 3000K and lower)
 ISO 9001
 ANSI C136.3, C136.10, C136.13, C136.15, C136.22, C136.25,
 C136.31, C136.37, C136.41, C78.377, C82.77



APPLICATION

Local, Collector, Arterial Roadways & Intersections

FINISH

Corrosion Resistant Polyester Powder Coating ≥ 3 mil Nominal Thickness
 ASTM B117 5,000 Hours Salt Spray Scribe Creepage Rating of 7 per ASTM D1654
 ASTM D523 Coating Gloss Retention Compliant
 ASTM G154 QUV Compliant
 Optional Coastal Finish per AAMA 2604
 Standard RAL Gray Color
 Optional Black, Dark Bronze, and White Color

OPTICAL

Standard CCT 2700K, 3000K, 4000K, and 5000K
 Dark-sky approved CCT 3000K and lower
 Optional CCT 2200K and 5700K
 No uplight, U = 0 per IESNA TM-15
 Color Rendering Index (CRI) > 70
 IESNA TYPE II, III, and IV
 IP-66 rated LED light module
 RoHS compliant LEDs
 Photometric performance is tested per IESNA LM-79, LM-63
 LED light engine, L₇₀ > 100,000 hours @ 25°C ambient per LM-80/TM-2
 8,000 to 16,000 Lumens
 145 to 165 Lumens per Watt

Lumen maintenance @ 25°C

Calculated per TM-21 based on LM-80 data and in-situ testing.

Models	60,000 hours	80,000 hours	100,000 hours
53 WiE - 68 WiE	> 96 %	> 96 %	> 94 %
76 WiE - 105 WiE	> 98 %	> 98 %	> 96 %

LIGHT SHIELD

House-side shield
 Left-side shield
 Right-side shield
 Cul-de-sac shield
 Street-side shield

WARRANTY

7-year product warranty, standard
 10-year product warranty, optional

SMX-LL5 LED ROADWAY LIGHTING

Project Name:

Date:

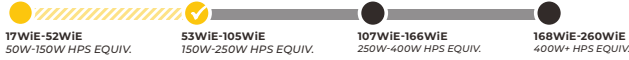
Project Number:

Note:

53 WiE - 105 WiE COBRA HEAD

150W - 250W HPS EQUIVALENT

CLICK TO
OTHER SIZES



Ordering Information

EXAMPLE: SMX-53WiE-HV-LL5-00-2770-T202-P-DB-10-FA

SMX - WiE - - LL5 - - - - - - - -

A B C D E F G H I

A	B	C	D	E
Wattage	Voltage	Control	CCT / CRI	Distribution
53 53WiE	NV 120-277VAC	00 7-pin Receptacle & Shorting Cap	2270 2200K / CRI 70	T202 Type II B
55 55WiE	HV 277-480VAC		2770 2700K / CRI 70	T212 Type II F
58 58WiE		PH 7-pin Receptacle & Photo Electric	3070 3000K / CRI 70	T302 Type III
62 62WiE			4070 4000K / CRI 70	T402 Type IV
68 68WiE		WC 7-pin Receptacle & Wireless Control	5070 5000K / CRI 70	
76 76WiE			5770 5700K / CRI 70	
81 81WiE		NR No receptacle	TF Turtle Friendly 590nm	
88 88WiE				
96 96WiE				
102 102WiE				
105 105WiE				

F	G	H	I
Mounting	Finish	Warranty	Option
P Arm Mount No Bracket	Blank Standard Gray DB Dark Bronze BK Black WH White X Customize CF Coastal Finish AAMA 2604	Blank Standard 7-Year Limited Warranty 10 10-Year Limited Warranty	Blank Standard ANSI C136.15 NEMA Label Included Blank Standard 20kV/10kA Surge Protection Device Included FA Field Adjustment CUL Customized Utility Label P7TL 7-pin Receptacle, Toolless type SPD20-IN 20Kv/10kA Surge Protection with Indicator FS Fusing ¹ ELI External Level Indicator CPL Customized Package Label
Additional mounting on PG 12. Order separately.			Additional shield accessories on PG 12. Order separately.

¹ Identify and provide specific discrete voltage (i.e. 120VAC or 220VAC or 240VAC or 277VAC) when placing product order with Fuse option



SMX-LL5 LED ROADWAY LIGHTING

Project Name:

53 WIE - 105 WIE COBRA HEAD

150W - 250W HPS EQUIVALENT

Date:

Project Number:

Note:

CLICK TO
OTHER SIZES



Performance Data 120-277VAC

Models	CCT	T202				T212				T302				T402			
		Watts	Lumen	Efficacy	BUG	Watts	Lumen	Efficacy	BUG	Watts	Lumen	Efficacy	BUG	Watts	Lumen	Efficacy	BUG
53WIE	2700K	53W	8395	157	B2U0G2	54W	8278	155	B2U0G2	54W	8381	155	B2U0G2	54W	7956	146	B1U0G2
	3000K	53W	8421	158	B2U0G2	54W	8379	156	B2U0G2	54W	8460	157	B2U0G2	54W	8101	149	B1U0G2
	4000K/5000K	53W	8846	166	B2U0G2	54W	8850	165	B2U0G2	53W	8949	168	B2U0G2	54W	8468	156	B1U0G2
55WIE	2700K	55W	8538	157	B2U0G2	56W	8610	155	B2U0G2	55W	8564	155	B2U0G2	55W	8110	147	B1U0G2
	3000K	55W	8658	157	B2U0G2	56W	8700	155	B2U0G2	56W	8754	156	B2U0G2	56W	8318	149	B1U0G2
	4000K/5000K	56W	9263	165	B2U0G2	55W	9166	165	B2U0G2	56W	9292	168	B2U0G2	55W	8640	157	B1U0G2
58WIE	2700K	59W	9181	156	B2U0G2	58W	8999	154	B2U0G2	59W	9052	155	B2U0G2	59W	8598	147	B1U0G2
	3000K	59W	9215	156	B2U0G2	58W	9049	155	B2U0G2	58W	9110	156	B2U0G2	59W	8735	149	B1U0G2
	4000K/5000K	58W	9585	165	B2U0G2	58W	9647	166	B2U0G2	59W	9814	167	B2U0G2	58W	9129	157	B1U0G2
62WIE	2700K	62W	9636	155	B2U0G2	63W	9662	153	B2U0G2	63W	9669	154	B2U0G2	63W	9181	146	B1U0G2
	3000K	63W	9772	155	B2U0G2	63W	9720	154	B2U0G2	63W	9746	156	B2U0G2	63W	9248	148	B1U0G2
	4000K/5000K	62W	10246	165	B2U0G2	62W	10302	165	B2U0G2	62W	10359	167	B2U0G2	60W	9270	154	B1U0G2
68WIE	2700K	69W	10562	154	B3U0G3	68W	10399	152	B2U0G2	69W	10436	152	B2U0G2	69W	9883	144	B1U0G3
	3000K	69W	10614	154	B3U0G3	68W	10432	153	B2U0G2	69W	10659	154	B2U0G2	69W	9994	146	B1U0G3
	4000K/5000K	69W	11195	163	B3U0G3	68W	11125	164	B2U0G2	68W	11234	165	B2U0G2	68W	10472	154	B1U0G3
76WIE	2700K	76W	11669	153	B3U0G3	76W	11266	148	B2U0G2	76W	11196	148	B2U0G2	76W	11019	145	B2U0G3
	3000K	76W	11738	154	B3U0G3	76W	11507	151	B2U0G2	76W	11419	150	B2U0G2	77W	11271	146	B2U0G3
	4000K/5000K	76W	12326	163	B3U0G3	76W	12385	163	B2U0G2	74W	12197	164	B2U0G2	77W	11840	153	B2U0G3
81WIE	2700K	83W	12583	152	B3U0G3	83W	12132	147	B2U0G2	81W	12028	148	B2U0G2	81W	11706	144	B2U0G3
	3000K	82W	12651	154	B3U0G3	82W	12338	151	B2U0G2	81W	12191	150	B2U0G2	82W	11930	145	B2U0G3
	4000K/5000K	82W	13245	161	B3U0G3	81W	13213	163	B2U0G2	81W	13294	164	B3U0G3	82W	12593	154	B2U0G3
88WIE	2700K	89W	13479	151	B3U0G3	88W	12904	146	B2U0G2	89W	13130	147	B3U0G3	88W	12626	143	B2U0G3
	3000K	89W	13536	153	B3U0G3	89W	13270	150	B2U0G2	89W	13196	149	B3U0G3	89W	12759	144	B2U0G3
	4000K/5000K	89W	14308	160	B3U0G3	87W	13982	160	B2U0G2	90W	14694	164	B3U0G3	88W	13383	153	B2U0G3
96WIE	2700K	96W	14362	150	B3U0G3	96W	13955	145	B3U0G3	96W	14269	149	B3U0G3	96W	13585	141	B2U0G3
	3000K	97W	14754	152	B3U0G3	96W	14351	149	B3U0G3	95W	14351	151	B3U0G3	97W	13785	142	B2U0G3
	4000K/5000K	97W	15389	160	B3U0G3	96W	15362	160	B3U0G3	96W	15658	163	B3U0G3	97W	14626	151	B2U0G3
102WIE	2700K	102W	15229	149	B3U0G3	103W	14816	144	B3U0G3	102W	15119	148	B3U0G3	101W	14241	140	B2U0G3
	3000K	102W	15345	151	B3U0G3	102W	15117	148	B3U0G3	102W	15194	150	B3U0G3	103W	14509	141	B2U0G3
	4000K/5000K	102W	16126	159	B3U0G3	102W	16321	159	B3U0G3	103W	16632	162	B3U0G3	103W	15411	150	B2U0G3
105WIE	2700K	106W	15801	149	B3U0G3	106W	15226	144	B3U0G3	106W	15630	147	B3U0G3	105W	14713	140	B2U0G3
	3000K	106W	15932	151	B3U0G3	105W	15501	147	B3U0G3	106W	15796	149	B3U0G3	105W	14828	141	B2U0G3
	4000K/5000K	106W	16688	158	B3U0G3	105W	16637	159	B3U0G3	105W	16955	162	B3U0G3	105W	15723	149	B2U0G3



SMX-LL5 LED ROADWAY LIGHTING

Project Name:

53 WIE - 105 WIE COBRA HEAD

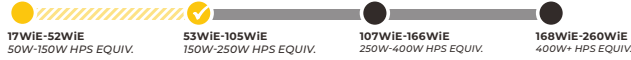
150W - 250W HPS EQUIVALENT

Date:

Project Number:

Note:

CLICK TO
OTHER SIZES



Performance Data 277-480VAC HV

Models	CCT	T202				T212				T302				T402			
		Watts	Lumen	Efficacy	BUG	Watts	Lumen	Efficacy	BUG	Watts	Lumen	Efficacy	BUG	Watts	Lumen	Efficacy	BUG
53WIE	2700K	53W	8320	156	B2U0G2	54W	8283	154	B2U0G2	53W	8363	157	B2U0G2	53W	7924	150	B1U0G2
	3000K	54W	8445	158	B2U0G2	53W	8318	156	B2U0G2	53W	8402	159	B2U0G2	53W	8013	150	B1U0G2
	4000K/5000K	54W	8916	164	B2U0G2	52W	8760	168	B2U0G2	53W	9011	171	B2U0G2	53W	8389	158	B1U0G2
55WIE	2700K	55W	8531	154	B2U0G2	55W	8569	155	B2U0G2	56W	8689	156	B2U0G2	55W	8200	148	B1U0G2
	3000K	55W	8604	156	B2U0G2	56W	8640	156	B2U0G2	56W	8744	158	B2U0G2	55W	8210	149	B1U0G2
	4000K/5000K	56W	9240	166	B2U0G2	55W	9142	167	B2U0G2	55W	9399	170	B2U0G2	56W	8724	157	B1U0G2
58WIE	2700K	59W	9022	154	B2U0G2	57W	8919	155	B2U0G2	58W	9003	156	B2U0G2	58W	8553	148	B1U0G2
	3000K	59W	9132	155	B2U0G2	58W	8964	154	B2U0G2	58W	9116	158	B2U0G2	58W	8624	149	B1U0G2
	4000K/5000K	58W	9659	166	B2U0G2	58W	9708	167	B2U0G2	59W	9958	170	B2U0G2	58W	9162	158	B1U0G2
62WIE	2700K	62W	9496	153	B2U0G2	63W	9585	153	B2U0G2	62W	9666	155	B2U0G2	63W	9191	147	B1U0G2
	3000K	62W	9649	155	B2U0G2	62W	9610	155	B2U0G2	62W	9794	157	B2U0G2	63W	9273	148	B1U0G2
	4000K/5000K	62W	10234	166	B2U0G2	63W	10346	164	B2U0G2	61W	10237	169	B2U0G2	61W	9276	154	B1U0G2
68WIE	2700K	69W	10523	152	B3U0G3	68W	10396	153	B2U0G2	67W	10480	155	B2U0G2	69W	10039	147	B1U0G3
	3000K	69W	10600	154	B3U0G3	69W	10492	153	B2U0G2	68W	10725	158	B2U0G2	68W	10107	148	B1U0G3
	4000K/5000K	69W	11278	164	B3U0G3	68W	11119	165	B2U0G2	67W	11324	168	B2U0G2	67W	10371	155	B1U0G3
76WIE	2700K	76W	11638	154	B3U0G3	77W	11623	151	B2U0G2	76W	11427	151	B2U0G2	76W	11084	145	B2U0G3
	3000K	76W	11793	155	B3U0G3	76W	11636	153	B2U0G2	76W	11571	152	B2U0G2	77W	11284	146	B2U0G3
	4000K/5000K	76W	12308	163	B3U0G3	77W	12581	164	B2U0G2	74W	12209	166	B2U0G2	77W	11912	155	B2U0G3
81WIE	2700K	81W	12342	153	B3U0G3	81W	12287	152	B2U0G2	81W	12115	149	B2U0G2	81W	11731	145	B2U0G3
	3000K	82W	12633	154	B3U0G3	82W	12419	153	B2U0G2	81W	12197	151	B2U0G2	81W	11767	146	B2U0G3
	4000K/5000K	81W	13245	164	B3U0G3	81W	13212	164	B2U0G2	81W	13518	168	B3U0G3	82W	12593	155	B2U0G3
88WIE	2700K	89W	13504	152	B3U0G3	89W	13395	151	B2U0G2	88W	13038	149	B3U0G3	88W	12636	144	B2U0G3
	3000K	89W	13602	154	B3U0G3	88W	13397	152	B2U0G2	88W	13308	151	B3U0G3	88W	12730	145	B2U0G3
	4000K/5000K	88W	14331	163	B3U0G3	86W	13870	161	B2U0G2	88W	14668	167	B3U0G3	88W	13462	154	B2U0G3
96WIE	2700K	96W	14570	151	B3U0G3	98W	14600	150	B3U0G3	97W	14494	149	B3U0G3	96W	13699	143	B2U0G3
	3000K	96W	14660	152	B3U0G3	97W	14685	152	B3U0G3	97W	14587	151	B3U0G3	96W	13826	143	B2U0G3
	4000K/5000K	96W	15588	162	B3U0G3	95W	15480	163	B3U0G3	96W	15909	165	B3U0G3	96W	14701	153	B2U0G3
102WIE	2700K	102W	15386	151	B3U0G3	102W	15214	149	B3U0G3	103W	15168	148	B3U0G3	102W	14394	142	B2U0G3
	3000K	102W	15564	152	B3U0G3	102W	15349	151	B3U0G3	103W	15435	150	B3U0G3	102W	14532	143	B2U0G3
	4000K/5000K	101W	16359	161	B3U0G3	102W	16606	162	B3U0G3	102W	16871	165	B3U0G3	102W	15409	152	B2U0G3
105WIE	2700K	106W	15903	150	B3U0G3	105W	15572	149	B3U0G3	105W	15513	148	B3U0G3	105W	14793	141	B2U0G3
	3000K	105W	15940	151	B3U0G3	106W	15860	150	B3U0G3	105W	15717	150	B3U0G3	105W	14865	142	B2U0G3
	4000K/5000K	104W	16787	161	B3U0G3	106W	17012	161	B3U0G3	105W	17216	165	B3U0G3	105W	15921	151	B2U0G3



SMX-LL5 LED ROADWAY LIGHTING

Project Name:

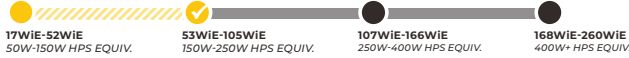
53 WIE - 105 WIE COBRA HEAD

150W - 250W HPS EQUIVALENT

Date:

Project Number:

CLICK TO
OTHER SIZES

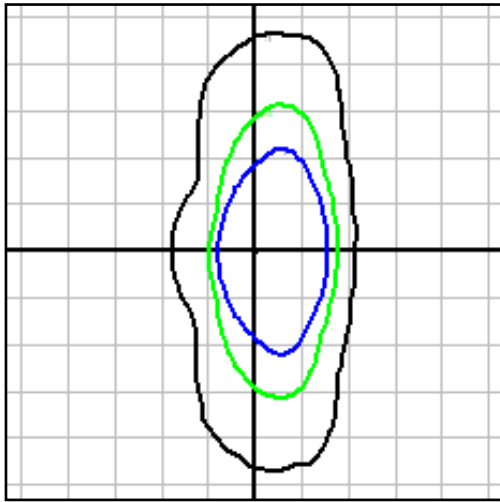


Note:

Photometric Plots

TYPE II B - T202

16,000 lumens, CCT 4000K

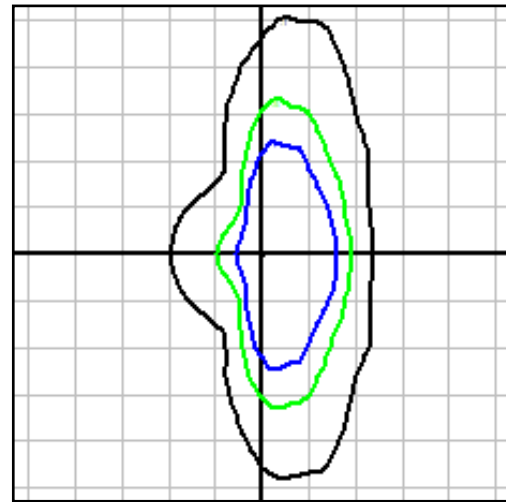


The plot is in units of mounting height of 25'.
 Black 0.1 fc Green 0.5 fc Blue 1 fc

TYPE II F - T212

16,000 lumens, CCT 4000K

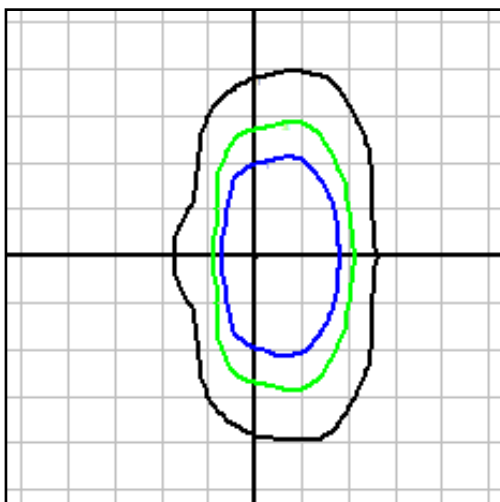
Controlled Backlight



The plot is in units of mounting height of 25'.
 Black 0.1 fc Green 0.5 fc Blue 1 fc

TYPE III - T302

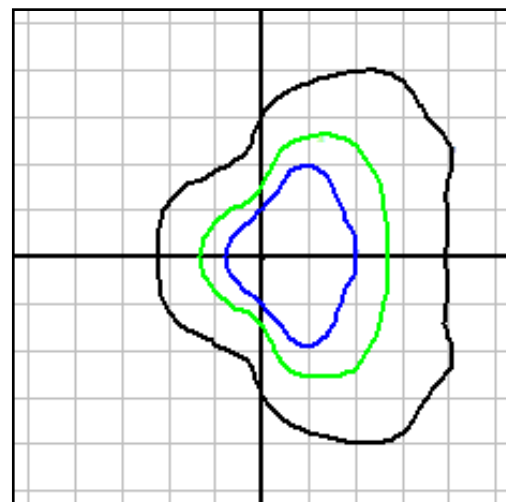
16,000 lumens, CCT 4000K



The plot is in units of mounting height of 25'.
 Black 0.1 fc Green 0.5 fc Blue 1 fc

TYPE IV - T402

16,000 lumens, CCT 4000K



The plot is in units of mounting height of 25'.
 Black 0.1 fc Green 0.5 fc Blue 1 fc



SMX-LL5 LED ROADWAY LIGHTING

Project Name:

Date:

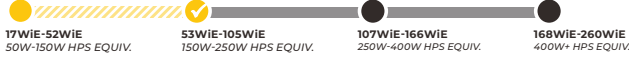
Project Number:

Note:

53 WIE - 105 WIE COBRA HEAD

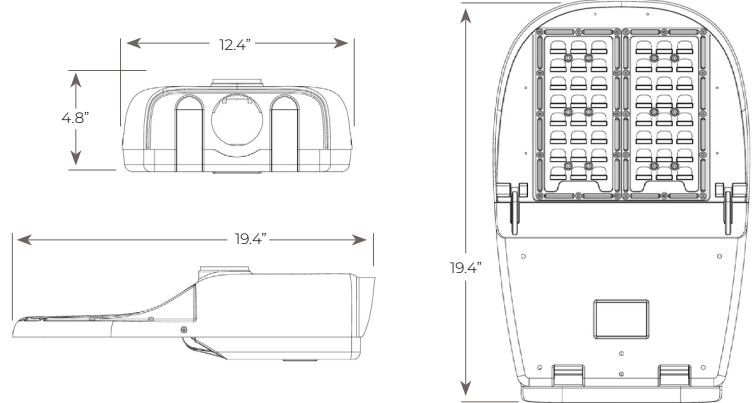
150W - 250W HPS EQUIVALENT

CLICK TO
OTHER SIZES



Product Dimensions

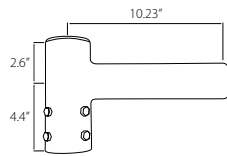
Effective Projected Area (EPA)	0.52 sq. ft.
Luminaire Weight	11 lbs.
Internal Leveling Adjustments	-5°, -2.5°, 0°, +5°, +10°
Mounting	Horizontal Mount Adjustable for 1.25" to 2" Nominal Mounting Pipe



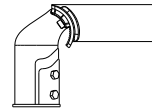
Mounting Bracket Options

ORDERING INFORMATION

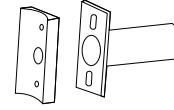
VMSB	Vertical Pole Mount Spoke Bracket Steel, no tilt
VMT	Vertical Pole Mount Fits 2-3/8" OD pole top; Aluminum alloy 0-45° Tilting, 5° Increment, Weight 5 lbs
SAS	Straight Arm for Square poles
SAR	Straight Arm for Round poles
MAS	Mast Arm for Square poles
MAR	Mast Arm for Round poles
AP	Aluminum Plate For 2" Tenon



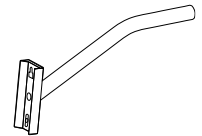
Vertical Pole Mount Spoke Bracket



Vertical Pole Mount



Straight Arm

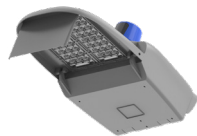


Mast Arm

Light Shield Options

ORDERING INFORMATION

SSS	Street-side Shield
HSS	House-side Shield
CSS	Cul-de-sac Shield
RSS	Right-side Shield
LSS	Left-side Shield



Street-side Shield



House-side Shield



Cul-de-sac Shield



Right-side Shield



Left-side Shield

Control Options

Shorting Cap
Photocell
Smart Control Node
No Receptacle



Shorting Cap



Photocell



Smart Control Node



No Receptacle



SMX-LL5 LED ROADWAY LIGHTING

Project Name:

107 WiE - 166 WiE COBRA HEAD

250W - 400W HPS EQUIVALENT

Date:

Project Number:

Note:

CLICK TO
OTHER SIZES



17WiE-52WiE
50W-150W HPS EQUIV.



53WiE-105WiE
150W-250W HPS EQUIV.



107WiE-166WiE
250W-400W HPS EQUIV.



168WiE-260WiE
400W+ HPS EQUIV.

Features

HPS EQUIVALENT

250W HPS to 400W HPS

CONSTRUCTION

Die cast aluminum housing ASTM A380 (default) & A360 (optional)

Tool-less entry/access

Terminal block for Class 1 connections (6AWG -14AWG)

Bubble level included

4-bolt Slip Fitter mounts to 1-5/8" to 2-3/8" O.D. Arm

ANSI C136.31 3G Vibration compliant

Standard RAL Gray color

Operating Temperature -40°C to +50°C

ANSI C136.41 7-pins rotatable receptacle included

ANSI C136.15 NEMA label included

ELECTRICAL

Input voltage 120-277 VAC & 277-480VAC, 50/60 Hz

20KV/10KA Surge Protection included

0-10V dimmable

IP-66 rated LED driver

Power Factor > 0.9

Total Harmonic Distortion (THD) < 15%

EMC complies with FCC 47 CFR Part 15

LED driver expected life > 100,000 hours @ 25°C ambient

ANSI C136.22 labels included

Optional fuse

FIELD ADJUSTABLE

Optional field wattage/lumen output adjustments

CONTROLS

7-pins receptacle with shorting cap (default)

7-pins receptacle with photocell

7-pins receptacle with Smart control node

Luminaire with No Receptacle

CERTIFICATIONS & COMPLIANCES

UL-1598, suitable for wet location

DLC V5.1 Premium

DarkSky approved (CCT 3000K and lower)

ISO 9001

ANSI C136.3, C136.10, C136.13, C136.15, C136.22, C136.25,

C136.31, C136.37, C136.41, C78.377, C82.77

APPLICATION

Local, Collector, Arterial Roadways & Intersections

FINISH

Corrosion Resistant Polyester Powder Coating ≥ 3 mil Nominal Thickness

ASTM B117 5,000 Hours Salt Spray Scribe Creepage Rating of 7 per ASTM D1654

ASTM D523 Coating Gloss Retention Compliant

ASTM G154 QUV Compliant

Optional Coastal Finish per AAMA 2604

Standard RAL Gray Color

Optional Black, Dark Bronze, and White Color

OPTICAL

Standard CCT 2700K, 3000K, 4000K, and 5000K

Dark-sky approved CCT 3000K and lower

Optional CCT 2200K and 5700K

No uplight, U = 0 per IESNA TM-15

Color Rendering Index (CRI) > 70

IESNA TYPE II, III, and IV

IP-66 rated LED light module

RoHS compliant LEDs

Photometric performance is tested per IESNA LM-79, LM-63

LED light engine, L₇₀ > 100,000 hours @ 25°C ambient per LM-80/TM-21

16,000 to 26,000 Lumens

145 to 165 Lumens per Watt

Lumen maintenance @ 25°C

Calculated per TM-21 based on LM-80 data and in-situ testing.

Models	60,000 hours	80,000 hours	100,000 hours
107 WiE - 166 WiE	> 98 %	> 97 %	> 96 %

LIGHT SHIELD

House-side shield

Left-side shield

Right-side shield

Cul-de-sac shield

Street-side shield

WARRANTY

7-year product warranty, standard

10-year product warranty, optional



www.solarmaxled.com
led@solarmaxtech.com
T: 951-300-0788 ■ F: 909-595-7388
3080 12th St., Riverside, CA 92507

SMX-LL5 LED ROADWAY LIGHTING

Project Name:

107 WiE - 166 WiE COBRA HEAD

250W - 400W HPS EQUIVALENT

Date:

Project Number:

Note:

CLICK TO
OTHER SIZES



Ordering Information

EXAMPLE: SMX-107WiE-HV-LL5-00-2770-T202-P-DB-10-FA

SMX - WiE - - LL5 - - - - - - - -

A
B
C
D
E
F
G
H
I

A	B	C	D	E
Wattage	Voltage	Control	CCT / CRI	Distribution
107 107WiE	NV 120-277VAC	00 7-pin Receptacle & Shorting Cap	2270 2200K / CRI 70	T202 Type II B
111 111WiE	HV 277-480VAC		2770 2700K / CRI 70	T212 Type II F
120 120WiE	XV 120-480VAC <i>Only applies to 134W</i>	PH 7-pin Receptacle & Photo Electric	3070 3000K / CRI 70	T302 Type III
126 126WiE		WC 7-pin Receptacle & Wireless Control	4070 4000K / CRI 70	T402 Type IV
130 130WiE		NR No receptacle	5070 5000K / CRI 70	
134 134WiE			5770 5700K / CRI 70	
139 139WiE			TF Turtle Friendly <i>590nm</i>	
140 140WiE				
142 142WiE				
149 149WiE				
158 158WiE				
166 166WiE				

F	G	H	I
Mounting	Finish	Warranty	Option
P Arm Mount No Bracket	Blank Standard Gray DB Dark Bronze BK Black WH White X Customize CF Coastal Finish AAMA 2604	Blank Standard 7-Year Limited Warranty 10 10-Year Limited Warranty	Blank Standard ANSI C136.15 NEMA Label Included Blank Standard 20kV/10kA Surge Protection Device Included FA Field Adjustment CUL Customized Utility Label P7TL 7-pin Receptacle, Tooless type SPD20-IN 20kV/10kA Surge Protection with Indicator FS Fusing ¹ ELI External Level Indicator CPL Customized Package Label
Additional mounting on PG 18. Order separately.			Additional shield accessories on PG 18. Order separately.

¹ Identify and provide specific discrete voltage (i.e. 120VAC or 220VAC or 240VAC or 277VAC) when placing product order with Fuse option

SMX-LL5 LED ROADWAY LIGHTING

Project Name:

107 WiE - 166 WiE COBRA HEAD

250W - 400W HPS EQUIVALENT

Date:

Project Number:

CLICK TO OTHER SIZES

17WiE-52WiE
50W-150W HPS EQUIV.

53WiE-105WiE
150W-250W HPS EQUIV.

107WiE-166WiE
250W-400W HPS EQUIV.

168WiE-260WiE
400W+ HPS EQUIV.

Note:

Performance Data 120-277VAC

Models	CCT	T202				T212				T302				T402			
		Watts	Lumen	Efficacy	BUG	Watts	Lumen	Efficacy	BUG	Watts	Lumen	Efficacy	BUG	Watts	Lumen	Efficacy	BUG
107WiE	2700K	108W	16954	157	B3U0G3	108W	16839	157	B3U0G3	109W	16928	156	B3U0G3	108W	15974	149	B2U0G3
	3000K	108W	17145	160	B3U0G3	108W	16986	158	B3U0G3	108W	17042	158	B3U0G3	108W	16045	149	B2U0G3
	4000K/5000K	108W	17863	165	B3U0G3	108W	18060	167	B3U0G3	107W	17946	168	B3U0G3	108W	17095	158	B2U0G3
111WiE	2700K	110W	17319	157	B3U0G3	112W	17483	157	B3U0G3	111W	17273	156	B3U0G3	111W	16505	148	B2U0G3
	3000K	112W	17838	159	B3U0G3	111W	17494	158	B3U0G3	111W	17396	157	B3U0G3	111W	16594	149	B2U0G3
	4000K/5000K	112W	18428	164	B3U0G3	110W	18438	167	B3U0G3	112W	18749	168	B3U0G3	111W	17527	158	B2U0G3
120WiE	2700K	120W	18678	156	B3U0G3	121W	18720	155	B3U0G3	120W	18591	154	B3U0G3	120W	17693	147	B2U0G4
	3000K	119W	18849	158	B3U0G3	121W	18837	156	B3U0G3	120W	18753	156	B3U0G3	120W	17857	149	B2U0G4
	4000K/5000K	121W	19716	163	B3U0G3	120W	19840	166	B3U0G3	117W	19456	167	B3U0G3	120W	18944	158	B2U0G4
126WiE	2700K	127W	19679	155	B3U0G3	127W	19576	154	B3U0G3	128W	19580	153	B3U0G3	126W	18235	145	B2U0G4
	3000K	126W	19898	158	B3U0G3	127W	19683	155	B3U0G3	127W	19756	155	B3U0G3	127W	18534	146	B2U0G4
	4000K/5000K	126W	20560	163	B3U0G3	127W	20931	165	B3U0G3	126W	20990	167	B3U0G3	126W	19784	157	B2U0G4
130WiE	2700K	129W	20027	155	B3U0G3	131W	20098	154	B3U0G3	130W	19907	153	B3U0G3	130W	18747	144	B2U0G4
	3000K	131W	20573	157	B3U0G3	130W	20116	155	B3U0G3	130W	20088	155	B3U0G3	130W	18977	146	B2U0G4
	4000K/5000K	130W	21100	163	B3U0G3	130W	21304	164	B3U0G3	131W	21731	166	B3U0G3	131W	20439	156	B2U0G4
134WiE	2700K	134W	20689	154	B3U0G3	133W	20579	155	B3U0G3	135W	20568	152	B3U0G3	134W	19272	144	B2U0G4
	3000K	133W	20874	157	B3U0G3	134W	20670	154	B3U0G3	134W	20753	154	B3U0G3	134W	19493	146	B2U0G4
	4000K/5000K	135W	21827	162	B3U0G3	134W	21880	164	B3U0G3	136W	22456	166	B3U0G3	134W	20995	156	B2U0G4
139WiE	2700K	139W	21333	154	B3U0G3	139W	21290	153	B3U0G3	140W	21209	152	B3U0G3	139W	19423	140	B2U0G4
	3000K	139W	21389	154	B3U0G3	139W	21414	154	B3U0G3	139W	21406	154	B3U0G3	139W	19784	143	B2U0G4
	4000K/5000K	139W	22444	161	B3U0G3	138W	22456	163	B3U0G3	141W	23193	165	B3U0G3	140W	21608	155	B2U0G4
140WiE	2700K	141W	21428	152	B3U0G3	142W	21683	153	B3U0G3	140W	21241	152	B3U0G3	140W	20011	143	B3U0G4
	3000K	141W	21683	154	B3U0G3	141W	21703	154	B3U0G3	140W	21460	154	B3U0G3	140W	20231	145	B3U0G4
	4000K/5000K	139W	22517	162	B3U0G3	140W	22771	162	B3U0G3	141W	23204	165	B3U0G3	141W	21789	155	B3U0G4
142WiE	2700K	143W	21765	152	B3U0G3	143W	21446	150	B3U0G3	143W	21652	151	B3U0G3	142W	20088	141	B3U0G4
	3000K	143W	21851	153	B3U0G3	143W	21463	151	B3U0G3	143W	21905	153	B3U0G3	142W	20458	144	B3U0G4
	4000K/5000K	143W	23045	161	B3U0G3	143W	23248	162	B3U0G3	144W	23703	164	B3U0G3	143W	21987	154	B3U0G4
149WiE	2700K	150W	22559	151	B3U0G3	150W	22653	151	B3U0G3	150W	22511	150	B3U0G3	149W	21151	142	B3U0G4
	3000K	149W	22680	152	B3U0G3	150W	22774	152	B3U0G3	149W	22747	152	B3U0G3	149W	21309	144	B3U0G4
	4000K/5000K	151W	24022	160	B3U0G3	149W	24196	162	B3U0G3	151W	24662	164	B3U0G3	150W	22705	152	B3U0G4
158WiE	2700K	159W	23804	149	B3U0G3	159W	23638	149	B3U0G3	160W	23705	149	B3U0G3	159W	22251	140	B3U0G4
	3000K	159W	23921	151	B3U0G3	159W	23756	150	B3U0G3	159W	23989	151	B3U0G3	158W	22464	142	B3U0G4
	4000K/5000K	157W	24893	159	B3U0G3	156W	25276	162	B3U0G3	160W	26020	162	B3U0G3	159W	23906	150	B3U0G4
166WiE	2700K	166W	24629	148	B3U0G3	166W	24469	148	B3U0G3	166W	24546	148	B3U0G3	166W	23174	140	B3U0G4
	3000K	165W	24721	150	B3U0G3	167W	24829	149	B3U0G3	165W	24791	150	B3U0G3	166W	23420	141	B3U0G4
	4000K/5000K	165W	25997	157	B3U0G3	167W	26661	160	B3U0G3	166W	26703	161	B3U0G3	168W	24915	149	B3U0G4



SMX-LL5 LED ROADWAY LIGHTING

Project Name:

107 WiE - 166 WiE COBRA HEAD

250W - 400W HPS EQUIVALENT

Date:

Project Number:

CLICK TO
OTHER SIZES

17WiE-52WiE
50W-150W HPS EQUIV.

53WiE-105WiE
150W-250W HPS EQUIV.

107WiE-166WiE
250W-400W HPS EQUIV.

168WiE-260WiE
400W+ HPS EQUIV.

Performance Data 277-480VAC HV

Models	CCT	T202				T212				T302				T402			
		Watts	Lumen	Efficacy	BUG	Watts	Lumen	Efficacy	BUG	Watts	Lumen	Efficacy	BUG	Watts	Lumen	Efficacy	BUG
107WiE	2700K	107W	16912	159	B3U0G3	107W	16906	158	B3U0G3	109W	16807	155	B3U0G3	107W	16326	152	B2U0G3
	3000K	108W	17131	159	B3U0G3	107W	17020	159	B3U0G3	108W	17112	159	B3U0G3	108W	16479	153	B2U0G3
	4000K/5000K	107W	17905	168	B3U0G3	107W	18132	169	B3U0G3	107W	18213	170	B3U0G3	107W	17365	162	B2U0G3
111WiE	2700K	111W	17582	158	B3U0G3	112W	17688	159	B3U0G3	112W	17396	156	B3U0G3	112W	16958	152	B2U0G3
	3000K	111W	17681	159	B3U0G3	112W	17749	159	B3U0G3	110W	17541	159	B3U0G3	111W	16981	153	B2U0G3
	4000K/5000K	111W	18762	169	B3U0G3	111W	18899	170	B3U0G3	111W	18962	170	B3U0G3	109W	17578	161	B2U0G3
120WiE	2700K	120W	18894	158	B3U0G3	120W	18922	158	B3U0G3	120W	18604	155	B3U0G3	120W	18106	151	B2U0G4
	3000K	120W	19012	158	B3U0G3	121W	19014	157	B3U0G3	121W	19052	157	B3U0G3	121W	18448	152	B2U0G4
	4000K/5000K	120W	20189	168	B3U0G3	120W	20374	169	B3U0G3	120W	20437	170	B3U0G3	120W	19784	165	B2U0G4
126WiE	2700K	126W	19768	157	B3U0G3	126W	19781	157	B3U0G3	127W	19654	155	B3U0G3	126W	18889	150	B2U0G4
	3000K	126W	19825	158	B3U0G3	126W	19784	158	B3U0G3	126W	19840	157	B3U0G3	126W	19027	151	B2U0G4
	4000K/5000K	126W	20999	167	B3U0G3	126W	21246	169	B3U0G3	126W	21280	170	B3U0G3	127W	20240	160	B2U0G4
130WiE	2700K	130W	20372	156	B3U0G3	130W	20373	157	B3U0G3	130W	20141	154	B3U0G3	130W	19393	149	B2U0G4
	3000K	130W	20430	157	B3U0G3	131W	20445	157	B3U0G3	130W	20432	157	B3U0G3	130W	19523	150	B2U0G4
	4000K/5000K	131W	21843	167	B3U0G3	130W	21924	168	B3U0G3	130W	21927	169	B3U0G3	131W	20910	160	B2U0G4
134WiE	2700K	134W	20890	156	B3U0G3	135W	20994	156	B3U0G3	135W	20556	153	B3U0G3	134W	20053	149	B2U0G4
	3000K	134W	20988	157	B3U0G3	135W	21151	157	B3U0G3	134W	20985	156	B3U0G3	134W	20187	150	B2U0G4
	4000K/5000K	135W	22430	167	B3U0G3	134W	22543	168	B3U0G3	133W	22437	169	B3U0G3	134W	21228	159	B2U0G4
139WiE	2700K	139W	21547	155	B3U0G3	139W	21556	156	B3U0G3	138W	21186	153	B3U0G3	139W	20619	148	B2U0G4
	3000K	138W	21646	156	B3U0G3	140W	21798	156	B3U0G3	138W	21566	156	B3U0G3	139W	20759	149	B2U0G4
	4000K/5000K	139W	23137	166	B3U0G3	139W	23417	168	B3U0G3	140W	23470	168	B3U0G3	139W	21762	157	B2U0G4
140WiE	2700K	140W	21785	155	B3U0G3	140W	21815	155	B3U0G3	140W	21619	154	B3U0G3	141W	20717	147	B3U0G4
	3000K	140W	21959	157	B3U0G3	140W	21878	156	B3U0G3	140W	21827	156	B3U0G3	141W	20788	148	B3U0G4
	4000K/5000K	140W	23213	166	B3U0G3	141W	23556	167	B3U0G3	141W	23589	168	B3U0G3	140W	22249	159	B3U0G4
142WiE	2700K	142W	22128	156	B3U0G3	143W	22105	155	B3U0G3	142W	21814	153	B3U0G3	143W	20961	147	B3U0G4
	3000K	142W	22192	156	B3U0G3	143W	22220	156	B3U0G3	142W	22143	156	B3U0G3	142W	20995	147	B3U0G4
	4000K/5000K	141W	23391	166	B3U0G3	142W	23729	167	B3U0G3	142W	23742	167	B3U0G3	141W	22363	158	B3U0G4
149WiE	2700K	149W	23093	155	B3U0G3	149W	22961	154	B3U0G3	148W	22695	153	B3U0G3	149W	21694	146	B3U0G4
	3000K	149W	23103	155	B3U0G3	150W	23189	155	B3U0G3	149W	23130	155	B3U0G3	149W	21897	147	B3U0G4
	4000K/5000K	148W	24479	165	B3U0G3	149W	24771	167	B3U0G3	149W	24810	167	B3U0G3	149W	23449	157	B3U0G4
158WiE	2700K	158W	24236	154	B3U0G3	156W	23977	153	B3U0G3	158W	23742	151	B3U0G3	157W	22728	145	B3U0G4
	3000K	158W	24346	154	B3U0G3	159W	24433	154	B3U0G3	159W	24406	153	B3U0G3	157W	23021	146	B3U0G4
	4000K/5000K	158W	25875	164	B3U0G3	159W	26306	165	B3U0G3	158W	26214	166	B3U0G3	159W	24734	156	B3U0G4
166WiE	2700K	166W	25287	153	B3U0G3	167W	25278	152	B3U0G3	166W	24991	151	B3U0G3	166W	23717	143	B3U0G4
	3000K	166W	25423	154	B3U0G3	167W	25488	153	B3U0G3	166W	25394	153	B3U0G3	166W	24009	145	B3U0G4
	4000K/5000K	163W	26141	160	B3U0G3	167W	27190	163	B3U0G3	164W	26664	164	B3U0G3	165W	25617	155	B3U0G4



SMX-LL5 LED ROADWAY LIGHTING

Project Name:

107 WiE - 166 WiE COBRA HEAD

250W - 400W HPS EQUIVALENT

Date:

Project Number:

CLICK TO
OTHER SIZES

17WiE-52WiE
50W-150W HPS EQUIV.

53WiE-105WiE
150W-250W HPS EQUIV.

107WiE-166WiE
250W-400W HPS EQUIV.

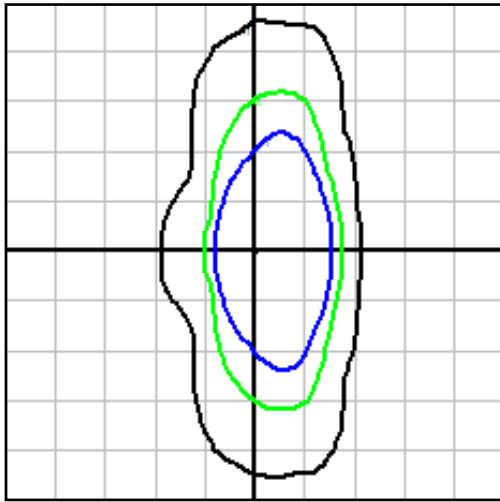
168WiE-260WiE
400W+ HPS EQUIV.

Note:

Photometric Plots

TYPE II B - T202

26,000 lumens, CCT 4000K



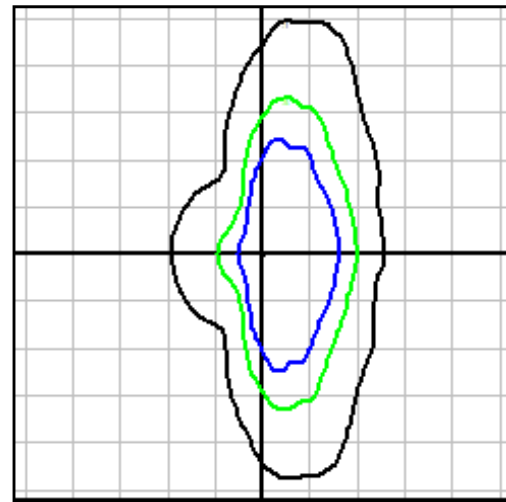
The plot is in units of mounting height of 30'.

Black 0.1 fc Green 0.5 fc Blue 1 fc

TYPE II F - T212

26,000 lumens, CCT 4000K

Controlled Backlight

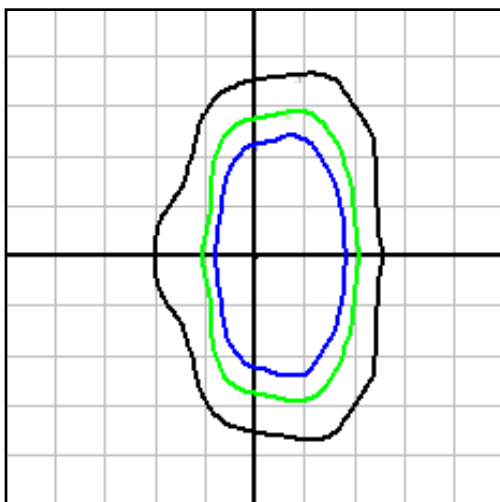


The plot is in units of mounting height of 30'.

Black 0.1 fc Green 0.5 fc Blue 1 fc

TYPE III - T302

26,000 lumens, CCT 4000K

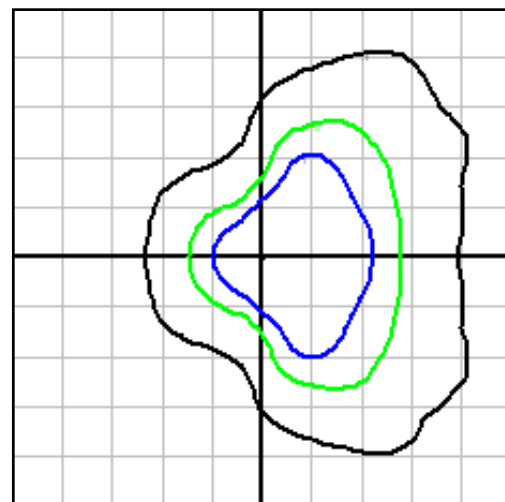


The plot is in units of mounting height of 30'.

Black 0.1 fc Green 0.5 fc Blue 1 fc

TYPE IV - T402

26,000 lumens, CCT 4000K



The plot is in units of mounting height of 30'.

Black 0.1 fc Green 0.5 fc Blue 1 fc



SMX-LL5 LED ROADWAY LIGHTING

Project Name:

Date:

Project Number:

Note:

107 WiE - 166 WiE COBRA HEAD

250W - 400W HPS EQUIVALENT

CLICK TO
OTHER SIZES



17WiE-52WiE
50W-150W HPS EQUIV.



53WiE-105WiE
150W-250W HPS EQUIV.



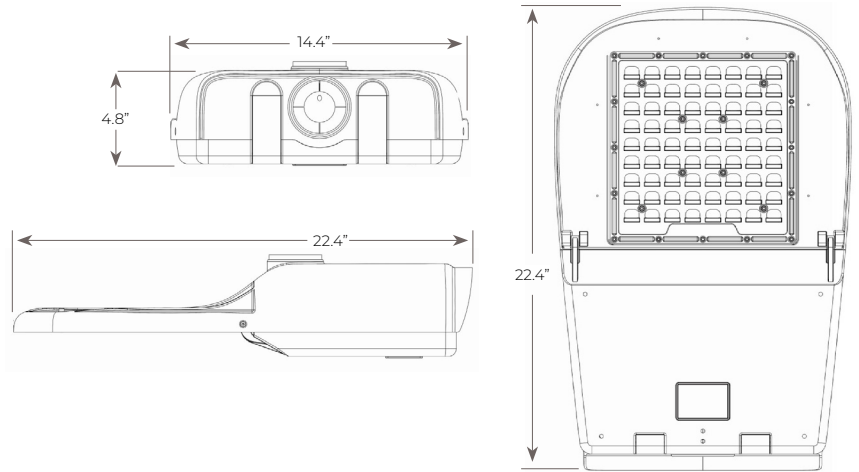
107WiE-166WiE
250W-400W HPS EQUIV.



168WiE-260WiE
400W+ HPS EQUIV.

Product Dimensions

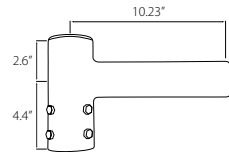
Effective Projected Area (EPA)	0.57 sq. ft.
Luminaire Weight	13 lbs.
Internal Leveling Adjustments	-5°, -2.5°, 0°, +5°, +10°
Mounting	Horizontal Mount Adjustable for 1.25" to 2" Nominal Mounting Pipe



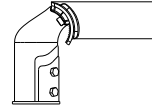
Mounting Bracket Options

ORDERING INFORMATION

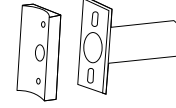
VMSB	Vertical Pole Mount Spoke Bracket Steel, no tilt
VMT	Vertical Pole Mount Fits 2-3/8" OD pole top; Aluminum alloy 0-45° Tilting, 5° Increment, Weight 5 lbs
SAS	Straight Arm for Square poles
SAR	Straight Arm for Round poles
MAS	Mast Arm for Square poles
MAR	Mast Arm for Round poles
AP	Aluminum Plate For 2" Tenon



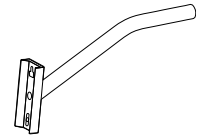
Vertical Pole Mount Spoke Bracket



Vertical Pole Mount



Straight Arm

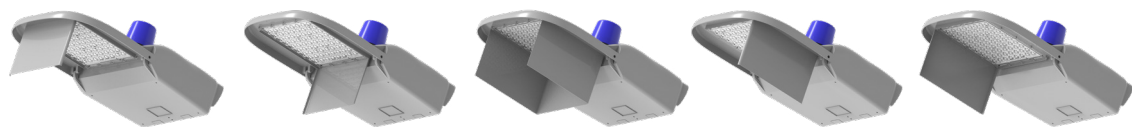


Mast Arm

Light Shield Options

ORDERING INFORMATION

SSS	Street-side Shield
HSS	House-side Shield
CSS	Cul-de-sac Shield
RSS	Right-side Shield
LSS	Left-side Shield



Street-side Shield

House-side Shield

Cul-de-sac Shield

Right-side Shield

Left-side Shield

Control Options

Shorting Cap
Photocell
Smart Control Node
No Receptacle



Shorting Cap



Photocell



Smart Control Node



No Receptacle



SMX-LL5 LED ROADWAY LIGHTING

Project Name:

168 WiE - 260 WiE COBRA HEAD

400W+ HPS EQUIVALENT

Date:

Project Number:

CLICK TO
OTHER SIZES



17WiE-52WiE
50W-150W HPS EQUIV.



53WiE-105WiE
150W-250W HPS EQUIV.



107WiE-166WiE
250W-400W HPS EQUIV.



168WiE-260WiE
400W+ HPS EQUIV.

Note:

Features

HPS EQUIVALENT

400W HPS to 400W+ HPS

CONSTRUCTION

Die cast aluminum housing ASTM A380 (default) & A360 (optional)

Tool-less entry/access

Terminal block for Class 1 connections (6AWG -14AWG)

Bubble level included

4-bolt Slip Fitter mounts to 1-5/8" to 2-3/8" O.D. Arm

ANSI C136.31 3G Vibration compliant

Standard RAL Gray color

Operating Temperature -40°C to +50°C

ANSI C136.41 7-pins rotatable receptacle included

ANSI C136.15 NEMA label included

ELECTRICAL

Input voltage 120-277 VAC & 277-480VAC, 50/60 Hz

20KV/10KA Surge Protection included

0-10V dimmable

IP-66 rated LED driver

Power Factor > 0.9

Total Harmonic Distortion (THD) < 15%

EMC complies with FCC 47 CFR Part 15

LED driver expected life > 100,000 hours @ 25°C ambient

ANSI C136.22 labels included

Optional fuse

FIELD ADJUSTABLE

Optional field wattage/lumen output adjustments

CONTROLS

7-pins receptacle with shorting cap (default)

7-pins receptacle with photocell

7-pins receptacle with Smart control node

Luminaire with No Receptacle

CERTIFICATIONS & COMPLIANCES

UL-1598, suitable for wet location

DLC V5.1 Premium

DarkSky approved (CCT 3000K and lower)

ISO 9001

ANSI C136.3, C136.10, C136.13, C136.15, C136.22, C136.25,

C136.31, C136.37, C136.41, C78.377, C82.77

APPLICATION

Local, Collector, Arterial Roadways & Intersections

FINISH

Corrosion Resistant Polyester Powder Coating ≥ 3 mil Nominal Thickness

ASTM B117 5,000 Hours Salt Spray Scribe Creepage Rating of 7 per ASTM D1654

ASTM D523 Coating Gloss Retention Compliant

ASTM G154 QUV Compliant

Optional Coastal Finish per AAMA 2604

Standard RAL Gray Color

Optional Black, Dark Bronze, and White Color

OPTICAL

Standard CCT 2700K, 3000K, 4000K, and 5000K

Dark-sky approved CCT 3000K and lower

Optional CCT 2200K and 5700K

No uplight, U = 0 per IESNA TM-15

Color Rendering Index (CRI) > 70

IESNA TYPE II, III, and IV

IP-66 rated LED light module

RoHS compliant LEDs

Photometric performance is tested per IESNA LM-79, LM-63

LED light engine, L_{70} > 100,000 hours @ 25°C ambient per LM-80/TM-21

26,000 to 39,000 Lumens

145 to 165 Lumens per Watt

Lumen maintenance @ 25°C

Calculated per TM-21 based on LM-80 data and in-situ testing.

Models	60,000 hours	80,000 hours	100,000 hours
168 WiE - 260 WiE	> 96 %	> 96 %	> 94 %

LIGHT SHIELD

House-side shield

Left-side shield

Right-side shield

Cul-de-sac shield

Street-side shield

WARRANTY

7-year product warranty, standard

10-year product warranty, optional



www.solarmaxled.com
led@solarmaxtech.com
T: 951-300-0788 ■ F: 909-595-7388
3080 12th St., Riverside, CA 92507

SMX-LL5 LED ROADWAY LIGHTING

Project Name:

168 WiE - 260 WiE COBRA HEAD

400W+ HPS EQUIVALENT

Date:

Project Number:

CLICK TO
OTHER SIZES

17WiE-52WiE
50W-150W HPS EQUIV.

53WiE-105WiE
150W-250W HPS EQUIV.

107WiE-166WiE
250W-400W HPS EQUIV.

168WiE-260WiE
400W+ HPS EQUIV.

Note:

Ordering Information

EXAMPLE: SMX-168WiE-HV-LL5-00-2770-T202-P-DB-10-FA

SMX - WiE - - LL5 - - - - - - - -

A B C D E F G H I

A	B	C	D	E
Wattage	Voltage	Control	CCT / CRI	Distribution
168 168WiE	NV 120-277VAC	00 7-pin Receptacle & Shorting Cap	2270 2200K / CRI 70	T202 Type II B
177 177WiE	HV 277-480VAC	PH 7-pin Receptacle & Photo Electric	2770 2700K / CRI 70	T212 Type II F
184 184WiE		WC 7-pin Receptacle & Wireless Control	3070 3000K / CRI 70	T302 Type III
190 190WiE		NR No receptacle	4070 4000K / CRI 70	T402 Type IV
198 198WiE			5070 5000K / CRI 70	
210 210WiE			5770 5700K / CRI 70	
218 218WiE			TF Turtle Friendly 590nm	
230 230WiE				
240 240WiE				
250 250WiE				
260 260WiE				

F	G	H	I
Mounting	Finish	Warranty	Option
P Arm Mount No Bracket	Blank Standard Gray DB Dark Bronze BK Black WH White X Customize CF Coastal Finish AAMA 2604	Blank Standard 7-Year Limited Warranty 10 10-Year Limited Warranty	Blank Standard ANSI C136.15 NEMA Label Included Blank Standard 20kV/10kA Surge Protection Device Included FA Field Adjustment CUL Customized Utility Label P7TL 7-pin Receptacle, Tooless type SPD20-IN 20Kv/10kA Surge Protection with Indicator FS Fusing ¹ ELI External Level Indicator CPL Customized Package Label
<i>Additional mounting on PG 24. Order separately.</i>			<i>Additional shield accessories on PG 24. Order separately.</i>

¹ Identify and provide specific discrete voltage (i.e. 120VAC or 220VAC or 240VAC or 277VAC) when placing product order with Fuse option



SMX-LL5 LED ROADWAY LIGHTING

Project Name:

168 WiE - 260 WiE COBRA HEAD

400W+ HPS EQUIVALENT

Date:

Project Number:

Note:

CLICK TO OTHER SIZES

17WiE-52WiE
50W-150W HPS EQUIV.

53WiE-105WiE
150W-250W HPS EQUIV.

107WiE-166WiE
250W-400W HPS EQUIV.

168WiE-260WiE
400W+ HPS EQUIV.

Performance Data 120-277VAC

Models	CCT	T202				T212				T302				T402			
		Watts	Lumen	Efficacy	BUG	Watts	Lumen	Efficacy	BUG	Watts	Lumen	Efficacy	BUG	Watts	Lumen	Efficacy	BUG
168WiE	2700K	167W	26179	157	B4U0G4	170W	25404	150	B3U0G3	168W	25193	150	B3U0G3	167W	23965	143	B3U0G4
	3000K	170W	26766	158	B4U0G4	168W	25620	152	B3U0G3	167W	25259	152	B3U0G3	167W	24307	145	B3U0G4
	4000K/5000K	168W	27779	166	B4U0G4	168W	27909	165	B3U0G4	168W	28278	168	B4U0G4	169W	26061	154	B3U0G4
177WiE	2700K	177W	27473	155	B4U0G4	177W	26482	149	B3U0G3	179W	26505	148	B3U0G4	177W	24951	141	B3U0G4
	3000K	177W	27694	157	B4U0G4	177W	26841	151	B3U0G3	177W	26646	151	B3U0G4	177W	25464	144	B3U0G4
	4000K/5000K	174W	28650	165	B4U0G4	178W	29276	165	B3U0G4	178W	29767	167	B4U0G4	177W	27249	154	B3U0G4
184WiE	2700K	184W	28357	154	B4U0G4	185W	27354	148	B3U0G4	184W	27004	147	B3U0G4	184W	26015	141	B3U0G4
	3000K	183W	28579	156	B4U0G4	184W	27869	151	B3U0G4	183W	27467	150	B3U0G4	185W	26412	143	B3U0G4
	4000K/5000K	183W	29835	163	B4U0G4	183W	30540	167	B3U0G4	185W	30838	167	B4U0G4	186W	28374	153	B3U0G4
190WiE	2700K	187W	28791	154	B4U0G4	191W	28104	147	B3U0G4	189W	27739	147	B4U0G4	190W	26654	141	B3U0G4
	3000K	190W	29438	155	B4U0G4	190W	28649	151	B3U0G4	190W	28203	148	B4U0G4	190W	27054	142	B3U0G4
	4000K/5000K	189W	30744	162	B4U0G4	192W	31321	163	B3U0G4	192W	31808	166	B4U0G4	190W	28962	153	B3U0G5
198WiE	2700K	198W	30008	152	B4U0G4	198W	29057	147	B3U0G4	200W	29074	146	B4U0G4	198W	27605	140	B3U0G4
	3000K	200W	30710	153	B4U0G4	198W	29602	150	B3U0G4	197W	29115	148	B4U0G4	197W	27887	141	B3U0G4
	4000K/5000K	199W	32026	161	B4U0G4	196W	31806	162	B3U0G4	199W	32817	165	B4U0G4	198W	29955	151	B3U0G5
210WiE	2700K	211W	31757	150	B4U0G4	211W	30435	144	B3U0G4	207W	29992	145	B4U0G4	211W	29029	138	B3U0G5
	3000K	211W	31994	152	B4U0G4	211W	31187	148	B3U0G4	207W	30431	147	B4U0G4	211W	29352	139	B3U0G5
	4000K/5000K	210W	33543	160	B4U0G4	210W	33694	160	B3U0G4	213W	34711	163	B4U0G4	210W	31473	150	B3U0G5
218WiE	2700K	215W	32243	150	B4U0G4	219W	31308	143	B3U0G4	221W	31565	143	B4U0G4	219W	29914	137	B3U0G5
	3000K	218W	32900	151	B4U0G4	218W	32442	149	B3U0G4	218W	31661	145	B4U0G4	219W	30236	138	B3U0G5
	4000K/5000K	219W	34556	158	B4U0G4	219W	34770	159	B3U0G4	220W	35702	162	B4U0G4	219W	32553	149	B3U0G5
230WiE	2700K	228W	33850	148	B4U0G4	230W	33860	147	B3U0G4	228W	33857	148	B4U0G4	230W	31516	137	B3U0G5
	3000K	230W	34325	149	B4U0G4	228W	33923	149	B3U0G4	231W	34431	149	B4U0G4	231W	32003	139	B3U0G5
	4000K/5000K	230W	36404	159	B4U0G4	232W	36217	156	B3U0G4	233W	37637	161	B4U0G4	229W	33638	147	B3U0G5
240WiE	2700K	239W	34952	146	B4U0G4	242W	35054	145	B3U0G4	239W	35090	147	B4U0G4	239W	32527	136	B3U0G5
	3000K	241W	35667	148	B4U0G4	240W	35061	146	B3U0G4	241W	35674	148	B4U0G4	241W	33034	137	B3U0G5
	4000K/5000K	242W	37895	157	B4U0G4	239W	37121	155	B4U0G4	240W	38464	160	B4U0G4	239W	34607	145	B3U0G5
250WiE	2700K	250W	36259	145	B4U0G4	250W	35968	144	B3U0G4	250W	36238	145	B4U0G4	250W	33620	134	B3U0G5
	3000K	249W	36791	148	B4U0G4	250W	36148	145	B3U0G4	249W	36563	147	B4U0G4	251W	34014	136	B3U0G5
	4000K/5000K	250W	38930	156	B4U0G4	251W	38551	154	B4U0G4	252W	40034	159	B4U0G4	250W	36260	145	B3U0G5
260WiE	2700K	258W	37319	145	B4U0G4	261W	37283	143	B4U0G4	258W	37248	144	B4U0G4	260W	34555	133	B3U0G5
	3000K	260W	38067	146	B4U0G4	261W	37592	144	B4U0G4	260W	38017	146	B4U0G4	260W	35231	135	B3U0G5
	4000K/5000K	261W	40203	154	B4U0G4	259W	39462	152	B4U0G4	263W	41255	157	B4U0G4	259W	36754	142	B3U0G5



SMX-LL5 LED ROADWAY LIGHTING

Project Name:

168 WiE - 260 WiE COBRA HEAD

400W+ HPS EQUIVALENT

Date:

Project Number:

Note:

CLICK TO
OTHER SIZES

17WiE-52WiE
50W-150W HPS EQUIV.

53WiE-105WiE
150W-250W HPS EQUIV.

107WiE-166WiE
250W-400W HPS EQUIV.

168WiE-260WiE
400W+ HPS EQUIV.

Performance Data 277-480VAC HV

Models	CCT	T202				T212				T302				T402			
		Watts	Lumen	Efficacy	BUG	Watts	Lumen	Efficacy	BUG	Watts	Lumen	Efficacy	BUG	Watts	Lumen	Efficacy	BUG
168WiE	2700K	169W	26616	157	B4U0G4	169W	26599	158	B3U0G3	168W	25566	152	B3U0G3	168W	24848	148	B3U0G4
	3000K	168W	26680	159	B4U0G4	168W	26661	158	B3U0G3	168W	25940	154	B3U0G3	169W	25084	149	B3U0G4
	4000K/5000K	168W	28651	170	B4U0G4	169W	28236	166	B3U0G4	168W	28027	167	B4U0G4	169W	26898	159	B3U0G4
177WiE	2700K	177W	27656	157	B4U0G4	173W	26841	155	B3U0G3	176W	26313	150	B3U0G4	177W	25977	147	B3U0G4
	3000K	177W	27864	158	B4U0G4	173W	26881	156	B3U0G3	176W	26752	152	B3U0G4	176W	26104	148	B3U0G4
	4000K/5000K	177W	29958	170	B4U0G4	176W	29641	168	B3U0G4	178W	29600	166	B4U0G4	176W	28027	159	B3U0G4
184WiE	2700K	184W	28688	156	B4U0G4	184W	28882	157	B3U0G4	183W	27127	148	B3U0G4	183W	26789	146	B3U0G4
	3000K	183W	28816	157	B4U0G4	184W	28899	157	B3U0G4	183W	27449	150	B3U0G4	185W	26946	146	B3U0G4
	4000K/5000K	184W	30994	168	B4U0G4	183W	30777	168	B3U0G4	185W	30673	166	B4U0G4	184W	28731	156	B3U0G4
190WiE	2700K	190W	29475	155	B4U0G4	191W	29692	156	B3U0G4	190W	28021	148	B4U0G4	191W	27694	145	B3U0G4
	3000K	190W	29616	156	B4U0G4	190W	29705	156	B3U0G4	191W	28647	150	B4U0G4	191W	27871	146	B3U0G4
	4000K/5000K	190W	31840	168	B4U0G4	191W	31861	167	B3U0G4	191W	31284	164	B4U0G4	190W	29897	157	B3U0G5
198WiE	2700K	199W	30684	155	B4U0G4	198W	30578	155	B3U0G4	198W	29189	147	B4U0G4	197W	28283	144	B3U0G4
	3000K	198W	30864	156	B4U0G4	197W	30601	156	B3U0G4	198W	29622	149	B4U0G4	196W	28313	144	B3U0G4
	4000K/5000K	198W	32979	167	B4U0G4	198W	32810	166	B3U0G4	197W	32580	165	B4U0G4	197W	30840	157	B3U0G5
210WiE	2700K	209W	31874	152	B4U0G4	210W	32144	153	B3U0G4	210W	30906	147	B4U0G4	210W	30217	144	B3U0G5
	3000K	210W	32168	154	B4U0G4	210W	32200	153	B3U0G4	210W	31398	149	B4U0G4	211W	30322	144	B3U0G5
	4000K/5000K	210W	34681	165	B4U0G4	210W	34302	164	B3U0G4	209W	34180	163	B4U0G4	210W	32483	155	B3U0G5
218WiE	2700K	217W	33114	152	B4U0G4	217W	33094	152	B3U0G4	219W	32085	146	B4U0G4	217W	31069	143	B3U0G5
	3000K	219W	33384	152	B4U0G4	218W	33120	152	B3U0G4	217W	32297	149	B4U0G4	217W	31233	144	B3U0G5
	4000K/5000K	217W	35681	165	B4U0G4	218W	35578	163	B3U0G4	217W	35111	162	B4U0G4	219W	33588	154	B3U0G5
230WiE	2700K	230W	34691	151	B4U0G4	230W	34528	150	B3U0G4	231W	34127	148	B4U0G4	229W	32420	142	B3U0G5
	3000K	230W	34825	151	B4U0G4	231W	35122	152	B3U0G4	230W	34515	150	B4U0G4	229W	32697	143	B3U0G5
	4000K/5000K	232W	37410	162	B4U0G4	228W	36473	160	B3U0G4	229W	37007	162	B4U0G4	231W	35049	152	B3U0G5
240WiE	2700K	241W	35767	148	B4U0G4	240W	35825	149	B3U0G4	239W	35027	147	B4U0G4	240W	33608	140	B3U0G5
	3000K	240W	35989	150	B4U0G4	240W	36241	151	B3U0G4	240W	35721	149	B4U0G4	240W	33902	141	B3U0G5
	4000K/5000K	241W	38916	162	B4U0G4	240W	38325	159	B4U0G4	241W	38069	158	B4U0G4	240W	36260	151	B3U0G5
250WiE	2700K	250W	36804	147	B4U0G4	250W	36900	147	B4U0G4	250W	36619	146	B4U0G4	250W	34644	139	B3U0G5
	3000K	251W	37324	149	B4U0G4	250W	37363	150	B4U0G4	251W	37112	148	B4U0G4	250W	34876	140	B3U0G5
	4000K/5000K	250W	39470	158	B4U0G4	251W	39638	158	B4U0G4	251W	39366	157	B4U0G4	251W	37408	149	B3U0G5
260WiE	2700K	260W	37835	146	B4U0G4	261W	38098	146	B4U0G4	261W	37691	145	B4U0G4	260W	35695	137	B3U0G5
	3000K	261W	38499	148	B4U0G4	261W	38731	148	B4U0G4	260W	38203	147	B4U0G4	261W	35955	138	B3U0G5
	4000K/5000K	260W	41443	159	B4U0G4	261W	40774	156	B4U0G4	261W	40595	156	B4U0G4	259W	38496	149	B3U0G5



CLICK TO
OTHER SIZES

17WiE-52WiE
50W-150W HPS EQUIV.

53WiE-105WiE
150W-250W HPS EQUIV.

107WiE-166WiE
250W-400W HPS EQUIV.

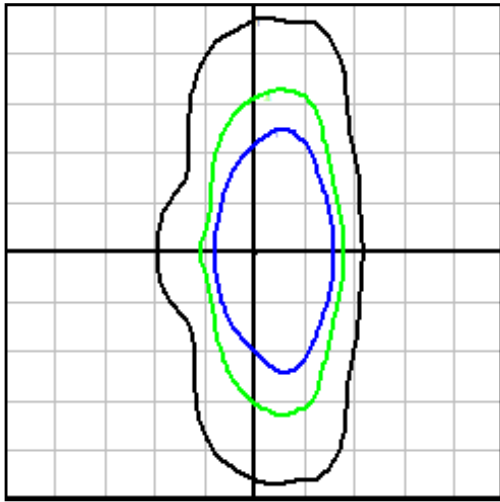
168WiE-260WiE
400W+ HPS EQUIV.

Note:

Photometric Plots

TYPE II B - T202

39,000 lumens, CCT 4000K



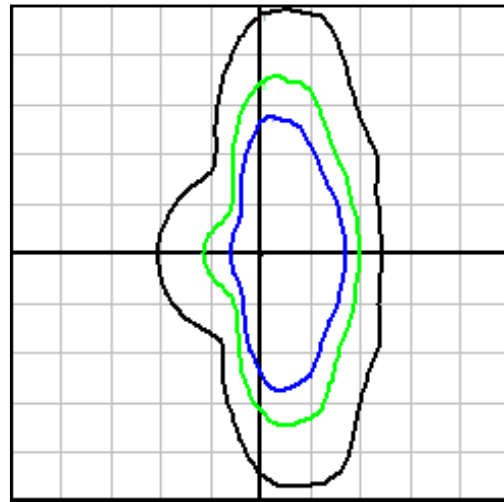
The plot is in units of mounting height of 35'.

Black 0.1 fc Green 0.5 fc Blue 1 fc

TYPE II F - T212

39,000 lumens, CCT 4000K

Controlled Backlight

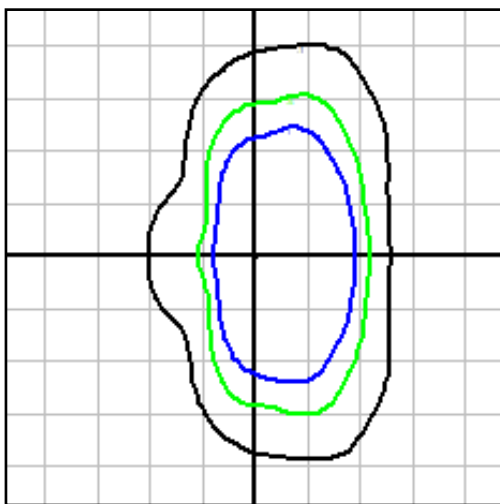


The plot is in units of mounting height of 35'.

Black 0.1 fc Green 0.5 fc Blue 1 fc

TYPE III - T302

39,000 lumens, CCT 4000K

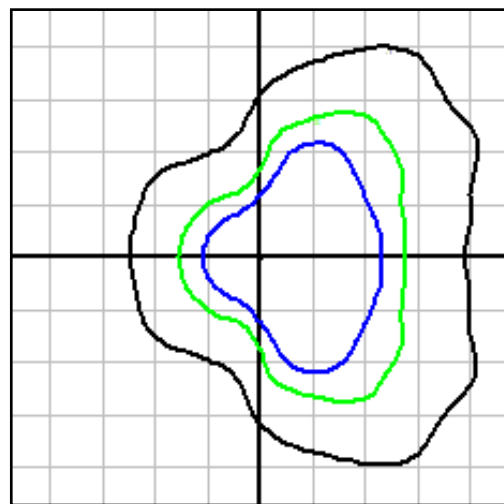


The plot is in units of mounting height of 35'.

Black 0.1 fc Green 0.5 fc Blue 1 fc

TYPE IV - T402

39,000 lumens, CCT 4000K



The plot is in units of mounting height of 35'.

Black 0.1 fc Green 0.5 fc Blue 1 fc

SMX-LL5 LED ROADWAY LIGHTING

Project Name:

168 WIE - 260 WIE COBRA HEAD

400W+ HPS EQUIVALENT

Date:

Project Number:

Note:

CLICK TO
OTHER SIZES

17WIE-52WIE
50W-150W HPS EQUIV.

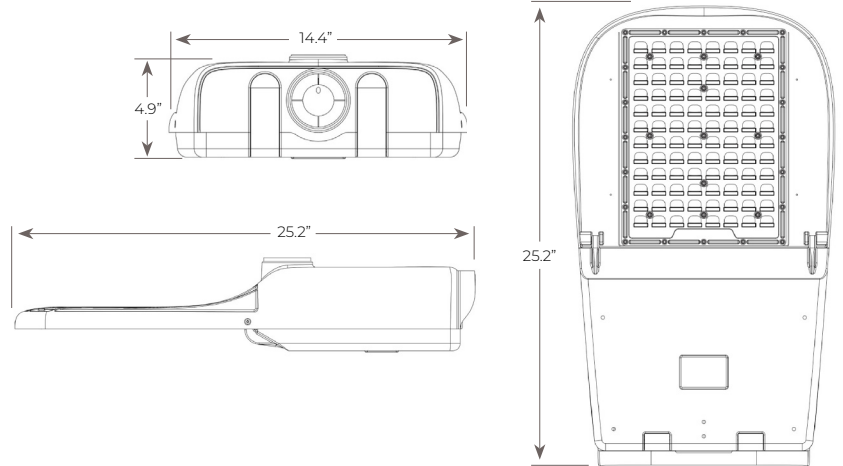
53WIE-105WIE
150W-250W HPS EQUIV.

107WIE-166WIE
250W-400W HPS EQUIV.

168WIE-260WIE
400W+ HPS EQUIV.

Product Dimensions

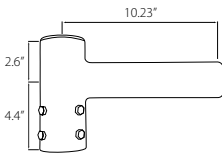
Effective Projected Area (EPA)	0.65 sq. ft.
Luminaire Weight	16 lbs.
Internal Leveling Adjustments	-5°, -2.5°, 0°, +5°, +10°
Mounting	Horizontal Mount Adjustable for 1.25" to 2" Nominal Mounting Pipe



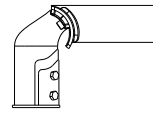
Mounting Bracket Options

ORDERING INFORMATION

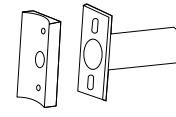
VMSB	Vertical Pole Mount Spoke Bracket Steel, no tilt
VMT	Vertical Pole Mount Fits 2-3/8" OD pole top; Aluminum alloy 0-45° Tilting, 5° Increment, Weight 5 lbs
SAS	Straight Arm for Square poles
SAR	Straight Arm for Round poles
MAS	Mast Arm for Square poles
MAR	Mast Arm for Round poles
AP	Aluminum Plate For 2" Tenon



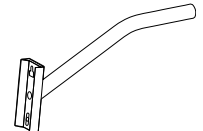
Vertical Pole Mount Spoke Bracket



Vertical Pole Mount



Straight Arm

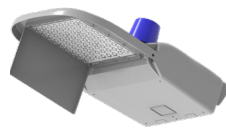


Mast Arm

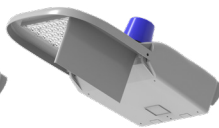
Light Shield Options

ORDERING INFORMATION

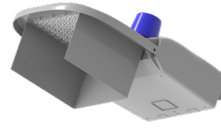
SSS	Street-side Shield
HSS	House-side Shield
CSS	Cul-de-sac Shield
RSS	Right-side Shield
LSS	Left-side Shield



Street-side Shield



House-side Shield



Cul-de-sac Shield



Right-side Shield



Left-side Shield

Control Options

Shorting Cap
Photocell
Smart Control Node
No Receptacle



Shorting Cap



Photocell



Smart Control Node



No Receptacle



www.solarmaxled.com
led@solarmaxtech.com
T: 951-300-0788 ■ F: 909-595-7388
3080 12th St., Riverside, CA 92507