



LED POST TOP LIGHT

IP SERIES



www.solarmaxled.com
led@solarmaxtech.com
T: 951-300-0788 ■ F: 909-595-7388
3080 12th St., Riverside, CA 92507

© SolarMax LED, Inc. 2022. All rights reserved.
Spec Sheet is subject to change without notice.
Rev. date: 2023-02-01

Project Name:

Project Number:

Note:

Date:

IP SERIES LED POST TOP LIGHTING

Project Name:

25 WiP - 300 WiP

75W - 750W HPS EQUIVALENT

Date:

Project Number:

Note:

Features

APPLICATION

Streets, Pathways, Walkways,
Parks, Campus, Parking Lots

OPTICS

No Uplight
CCT 3000K, 4000K, 5000K

ELECTRICAL

Power Factor > 90%
THD < 20%
LED lifetime up to L85/100,000 hours at 25°C ambient
Standard 10KV Surge Protection Device; Optional 20KV

DRIVER

Standard 0-10V dimmable driver

HOUSING

Die-cast aluminium alloy
IP 66 rating

MOUNTING

Various mounting brackets available
Withstand up to 3G vibration
Per ANSI C136.31

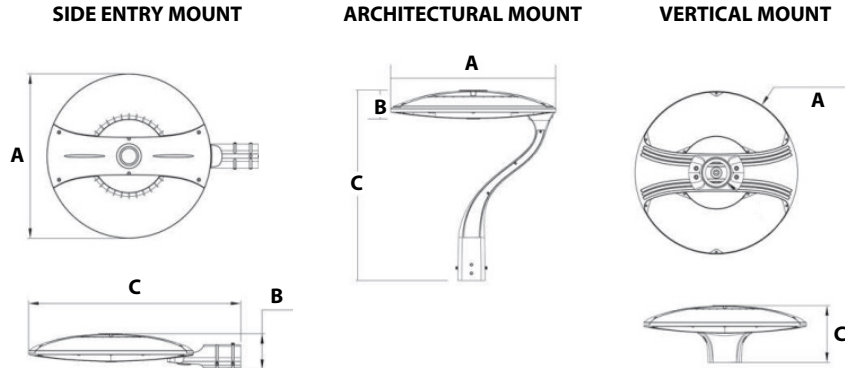
OPERATIONAL TEMPERATURE

Ambient temperature range: -40°F to +104°F

WARRANTY

Standard 5-year warranty
Optional 10-year warranty

Product Dimensions



Model	25WiP - 150WiP			240WiP - 300WiP		
	Side Entry	Architectural	Vertical	Side Entry	Architectural	Vertical
A	18.1"			20.5"		
B	4.2"	3.1"		4.4"	3.2"	
C	24.1"	20.9"	6.8"	26.4"	21.2"	7.1"
Packaging	23.2" x 23.2" x 5.7"			26.0" x 23.2" x 5.9"		
Net Weight	17 lbs			21 lbs		
Gross Weight	22 lbs			25 lbs		

IP SERIES LED POST TOP LIGHTING

Project Name:

25 WiP - 300 WiP

75W - 750W HPS EQUIVALENT

Date:

Project Number:

Note:

Ordering Information

EXAMPLE: 25WiP-NV-L3-00-3070-T4-SE-SG-10



A	B	C	D	E
Watts	Voltage	LED Chips	Control	CCT and CRI
25 WiP 25W 50 WiP 50W 60 WiP 60W 75 WiP 75W 120 WiP 120W 150 WiP 150W 240WiP 240W 300WiP 300W	NV 100-277V	L3	00 Without Sensor PH Photocell SN Motion Sensor Coverage up to 40' diameter with pole height of up to 20'	3070 3000K 70 CRI 4070 4000K 70 CRI 5070 5000K 70 CRI 3080 3000K 80 CRI 4080 4000K 80 CRI 5080 5000K 80 CRI

F	G	H	I
Distribution	Mounting	Finish	Option
T4 Type IV T5 Type V	SE Side Entry Fits 2-3/8" arm A Architectural Mount Fits 2-3/8" tenon B Vertical Mount Fits 2-3/8" tenon 3RPA 3" OD Round Pole Adapter 4RPA 4" OD Round Pole Adapter 5RPA 5" OD Round Pole Adapter XPPA Custom Adapter	SG Silver Grey BZ Bronze BK Black	10 10-year warranty SPD10 SPD 10KV SPD20 SPD 20KV P3 NEMA 3-pin Receptacle P7 NEMA 7-pin Receptacle SF Single Fusing DF Double Fusing BS Bird Spike FA Field Adjustment

Technical Specifications

	Model	Watts	Equivalence	Lumen Output		
				3000K	4000K	5000K
SIZE 1	25 WiP	25W	75W HPS	3,153 lm	3,250 lm	3,348 lm
	50 WiP	50W	150W HPS	6,063 lm	6,250 lm	6,438 lm
	60 WiP	60W	175W HPS	7,100 lm	7,320 lm	7,540 lm
	75 WiP	75W	200W HPS	8,730 lm	9,000 lm	9,270 lm
	120 WiP	120W	320W HPS	13,386 lm	13,800 lm	14,214 lm
	150 WiP	150W	400W HPS	16,005 lm	16,500 lm	16,995 lm
SIZE 2	240 WiP	240W	600W HPS	31,428 lm	32,400 lm	33,372 lm
	300 WiP	300W	600W HPS	37,830 lm	39,000 lm	40,170 lm

IP SERIES LED POST TOP LIGHTING

Project Name:

25 WiP - 300 WiP

75W - 750W HPS EQUIVALENT

Date:

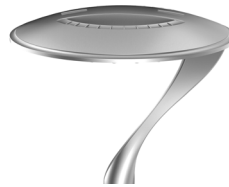
Project Number:

Note:

Mounting



SE
Side Entry



TYPE A
Architectural Mount



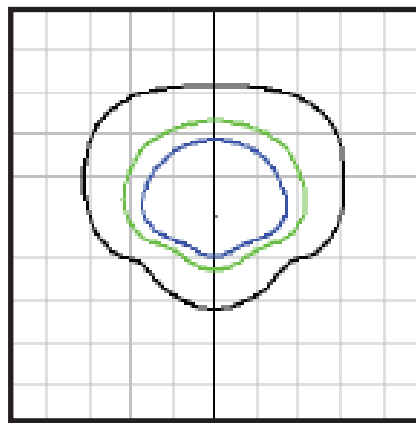
TYPE B
Vertical Mount

ACCESSORY

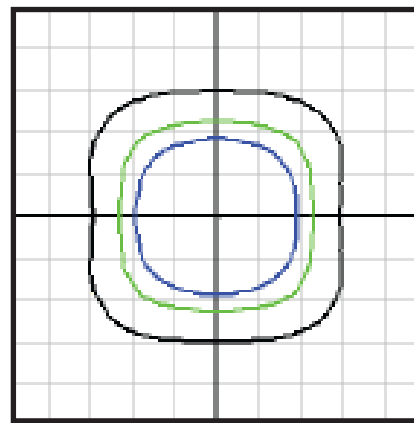
3RPA 3" OD Round Pole Adapter **5RPA** 5" OD Round Pole Adapter
4RPA 4" OD Round Pole Adapter **XPPA** Custom Adapter

Photometrics

The plot is in units of mounting height of 15'.



TYPE IV



TYPE V

Black 0.1 fc Green 0.5 fc Blue 1 fc