



## SMX-WIE SERIES

# LED ROADWAY LUMINAIRE

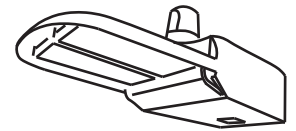
This SMX-WiE series roadway luminaire is designed for municipality and Department of Transportation, equivalent to 50W-400+W HPS/MH cobra-head luminaire.





# LED ROADWAY LUMINAIRE

## SMX-WIE SERIES



### APPLICATIONS

Local, Collector, Major Roadway,  
Small to Large Intersection,  
Freeway/Expressway

### REPLACEMENT SUGGESTIONS

~50W HPS = 18W LED  
~70-100W HPS = 26W/35W LED  
~150W HPS = 55W LED  
~250W HPS = 82W LED  
~310W HPS = 110W/115W LED  
~400W HPS = 150W LED  
~400W+ HPS = 190W/200W/260W LED

### BENEFIT

Up to 79% energy savings  
Additional savings with controls

### OPTICAL

Highly efficient LEDs with exceptional  
uplight control (U=0)  
Expected life over 100,000 hours at 25°C, L70  
CCT 2700K, 4000K, 5000K; 70 CRI minimum  
The optical system have a rating of IP 66

### ELECTRICAL

Voltage: 120-277 VAC, 347-480 VAC or 120-480 VAC\*  
(\*120-480 VAC applies to 134+)  
50/60Hz  
Power Factor >90%  
Total Harmonic Distortion (THD) < 15%  
Standard 20kV/10kA Surge Protection per ANSI C136.2  
EMC complies with FCC 47 CFR part 15  
Lifetime up to 100,000 hours at 25°C ambient  
0-10V dimmable power supply as standard

### FINISH

Standard gray finish; dark bronze, black, white are available  
Scribe creepage rating of 7 per ASTM D1654 after 5000 hours salt  
spray test per ASTM B117  
Coating exhibit  $\leq$  30% reduction of gloss per ASTM D522 after  
500 hours of QUV testing at ASTM G154  
Optional Coastal Finish per AAMA 2604  
Housing with corrosion resistant polyester powder coat larger  
than 2 mil thickness

### MECHANICAL

Die-cast aluminum alloy meeting ASTM Specification A380 with  
optional A360  
Meet 3G vibration rating per ANSI C136.31  
Luminaire includes terminal block, bird guard, and bubble level

### MOUNTING

Standard gauge slip fitter clamping for nominal 1-5/8" to 2-3/8"  
O.D. steel pipe  
Direct Pole Mount, Vertical Pole Mount options are available  
Leveling adaptor allows -5, -2.5, 0, +5, +10 degrees of correction

### OPERATION TEMPERATURE

Ambient temperature range: -40°C to +50°C (-40°F to +122°F)

### CONTROL

Standard ANSI C136.41 7-pin rotatable receptacle with shortening cap  
Optional photo electric sensor available  
Optional motion sensor available  
Optional wireless control available

### STANDARD

UL 1598 listed, suitable for wet location  
DesignLights Consortium (DLC) Premium qualified  
Complies with ANSI C136.2, C136.41, C136.10, C136.15,  
C136.22, C136.25, C136.31, C136.35, C136.37, C62.41, C82.77  
CCT 2700K and 3000K models meet IDA certification and  
approval

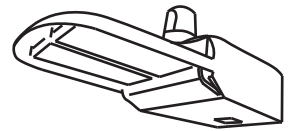


### WARRANTY

Standard 7-year warranty  
Optional 10-year warranty

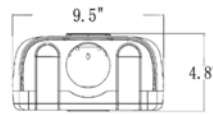
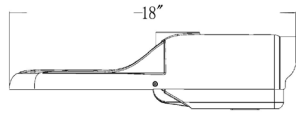
# LED ROADWAY LUMINAIRE

## SMX-WIE SERIES



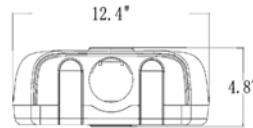
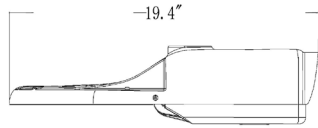
PRODUCT DIMENSION

SMX-18WiE  
SMX-26WiE  
SMX-35WiE  
SMX-55WiE



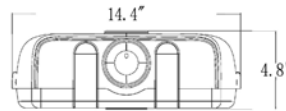
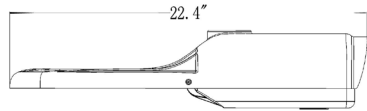
Luminaire Weight: 7.7 lbs.  
Luminaire EPA: 0.48 sq.ft.  
**Luminaire Package (2)** per box  
23" L x 13" W x 11" H / box  
17.6 lbs./ box

SMX-82WiE  
SMX-110WiE



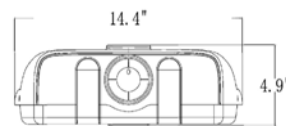
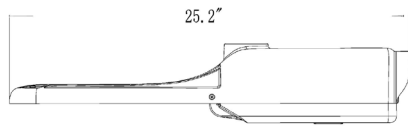
Luminaire Weight: 9.3 lbs.  
Luminaire EPA: 0.52 sq.ft.  
**Luminaire Package (2)** per box  
24" L x 15" W x 11" H / box  
21 lbs./ box

SMX-115WiE  
SMX-150WiE  
SMX-190WiE



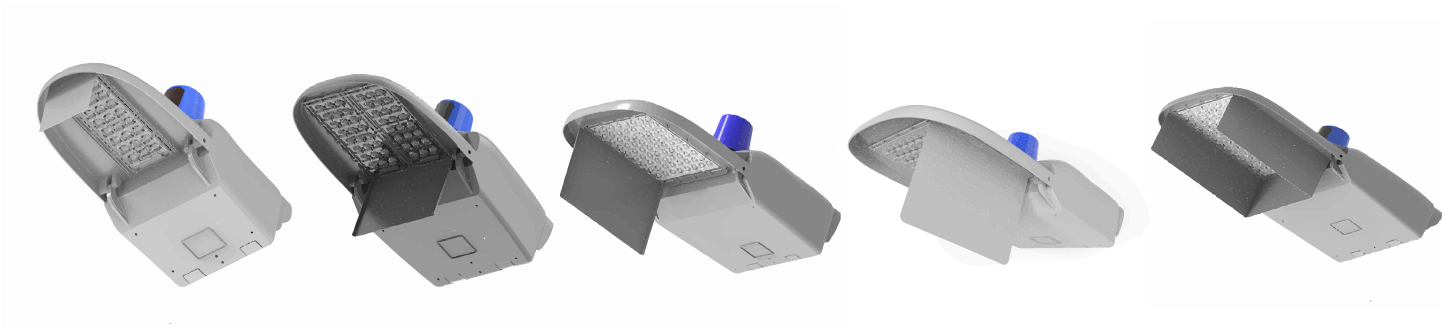
Luminaire Weight: 12.1 lbs.  
Luminaire EPA: 0.57 sq.ft.  
**Luminaire Package (2)** per box  
25" L x 18" W x 11" H / box  
26.5 lbs./ box

SMX-200WiE  
SMX-260WiE



Luminaire Weight: 16.1 lbs.  
Luminaire EPA: 0.65 sq.ft.  
**Luminaire Package (2)** per box  
29" L x 17" W x 11" H / box  
34.5 lbs./ box

## Light Shield Options



Street- Side Shield

House- Side Shield

Left Trespass Shield

Right Trespass Shield

Cul-de-sac Shield

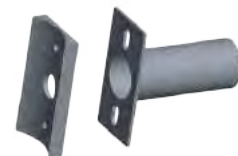
## Mounting Options



Mast Arm for Round/Square Pole



Vertical Pole Mount

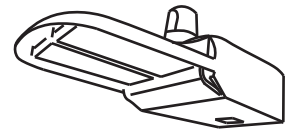


Straight Arm for Round/Square Pole



# LED ROADWAY LUMINAIRE

## SMX-WIE SERIES



### PERFORMANCE DATA

MODEL	DRIVE CURRENT (mA)	SYSTEM WATTAGE (W)	2700K		3000K		4000K/5000K		BUG RATING					
			LUMENS	LPW	LUMENS	LPW	LUMENS	LPW	TYPE II			TYPE III		
									2700K	3000K	4000K	2700K	3000K	4000K
SMX-18WiE	260	18	2273	132	2592	140	2711	146	B1-U0-G1	B1-U0-G1	B1-U0-G1	B1-U0-G1	B1-U0-G1	B1-U0-G1
SMX-26WiE	380	27	3470	129	3671	136	3841	142	B1-U0-G1	B1-U0-G1	B1-U0-G1	B1-U0-G1	B1-U0-G1	B1-U0-G1
SMX-35WiE	450	37	4606	127	5004	134	5305	142	B1-U0-G1	B1-U0-G1	B1-U0-G1	B1-U0-G1	B1-U0-G1	B1-U0-G1
SMX-55WiE	710	55	6637	121	7111	131	7578	141	B1-U0-G1	B1-U0-G1	B1-U0-G1	B1-U0-G1	B1-U0-G1	B1-U0-G1
SMX-82WiE	560	80	10311	127	10830	136	11175	141	B2-U0-G2	B2-U0-G2	B2-U0-G2	B2-U0-G2	B2-U0-G2	B2-U0-G2
SMX-110WiE	750	110	13642	123	14303	131	15267	141	B2-U0-G2	B2-U0-G2	B2-U0-G2	B2-U0-G2	B2-U0-G2	B2-U0-G2
SMX-115WiE	520	115	14876	129	15447	135	16498	144	B2-U0-G2	B2-U0-G2	B2-U0-G2	B2-U0-G2	B2-U0-G2	B2-U0-G2
SMX-150WiE	680	151	18619	124	19946	132	21224	142	B3-U0-G2	B3-U0-G3	B3-U0-G3	B2-U0-G2	B3-U0-G3	B3-U0-G2
SMX-190WiE	870	189	22482	120	24660	130	26510	140	B3-U0-G3	B3-U0-G3	B3-U0-G3	B3-U0-G3	B3-U0-G3	B3-U0-G3
SMX-200WiE	680	202	25116	123	26714	132	29083	145	B3-U0-G3	B3-U0-G3	B3-U0-G3	B3-U0-G3	B3-U0-G3	B3-U0-G3
SMX-260WiE	890	256	31291	121	33184	131	34933	137	B3-U0-G3	B3-U0-G3	B3-U0-G3	B3-U0-G3	B3-U0-G3	B3-U0-G3

### ORDERING INFORMATION

EXAMPLE: SMX-18WiE-NV-LV2-00-3070-T302-P-10-HSS

MODEL	SYSTEM WATTAGE	PRODUCT SERIES	VOLTAGE (Standard 20KV SPD)	LED SERIES	CONTROL (Standard 7-pin receptacle)	CCT	CRI	DISTRIBUTION	MOUNTING	FINISH	WARRANTY	ACCESSORIES
SMX	18 (18W)	WiE	NV 120-277VAC	LV2	00 Shorting Cap	22 2200K	70	T202 Type II Medium	P Arm Mount No bracket	Blank Gray	Blank 7-Year Limited Warranty	HSS House Side Shield
	26 (27W)		HV 347-480VAC		PH Photo Electric	27 2700K		T302 Type III Medium	MAS Mast Arm Square Pole	DB Dark Bronze	10 10-Year Limited Warranty	CSS Cul-De-Sac Shield
	35 (37W)		XV 120-480VAC <small>(*Only applies to 134W and above)</small>		MS* Motion Sensor (Under 40')	30 3000K		MAR Mast Arm Round Pole	BK Black	SSS Street Side Shield		
	55 (55W)		WC Wireless Control		40 4000K	SAS Straight Arm Square Pole		WH White	LSS Left Tresspass Shield			
	82 (80W)				50 5000K	SAR Straight Arm Round Pole		X Customize	RSS Right Tresspass Shield			
	110 (110W)					VM Vertical Pole Mount		CF Coastal Finish (AAMA 2604)	FA Field Adjustment			
115 (115W)	150 (151W)					UL Utility Label						
190 (189W)	200 (202W)											
260 (256W)												

\*Integrated motion sensor is available for 82W-260W, 120-277V only. Programmer needs to order separately.